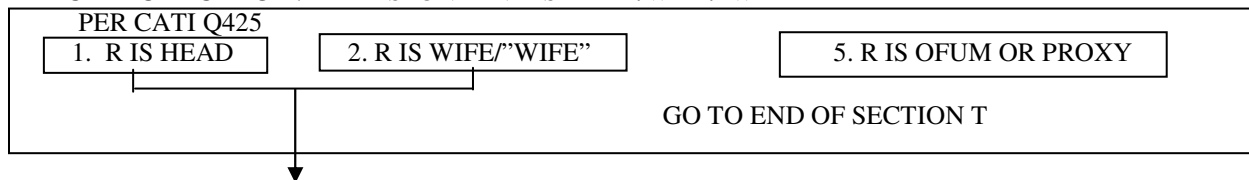


Panel Study of Income Dynamics, 2001
Generosity Questions, pages 201-207, which follow this page
From <http://simba.isr.umich.edu/Zips/ZipMain.aspx>

CATI CHECKPOINT – RESPONDENT IS HEAD/WIFE/“WIFE”**Section T: Philanthropy**

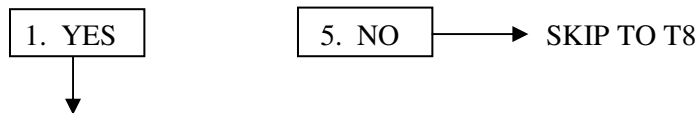
In this next to the last section, we will be talking about donations of time and money to charitable organizations.

Charitable organizations include religious or non-profit organizations that help those in need or that serve and support the public interests. They range in size from national organizations like the United Way and the American Red Cross down to local community organizations. They serve a variety of purposes such as religious activity, helping people in need, health care and medical research, education, arts, environment, and international aid. Our definition of charity **does not include** political contributions.

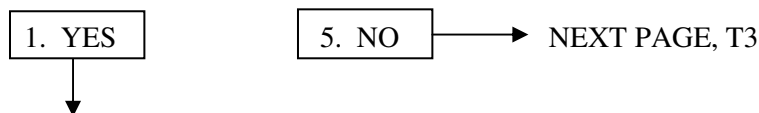
Donations include any gifts of money, assets, or property made directly to the organization, through payroll deduction, or collected by other means on behalf of the charity. This interview is limited to donations made during the calendar year 2000.

[GIVING TO CHARITABLE ORGANIZATIONS]

T1. **During the year 2000**, did you [or anyone in your family] **donate** money, assets, or property, with a combined value of **more than \$25** to religious or charitable organizations?

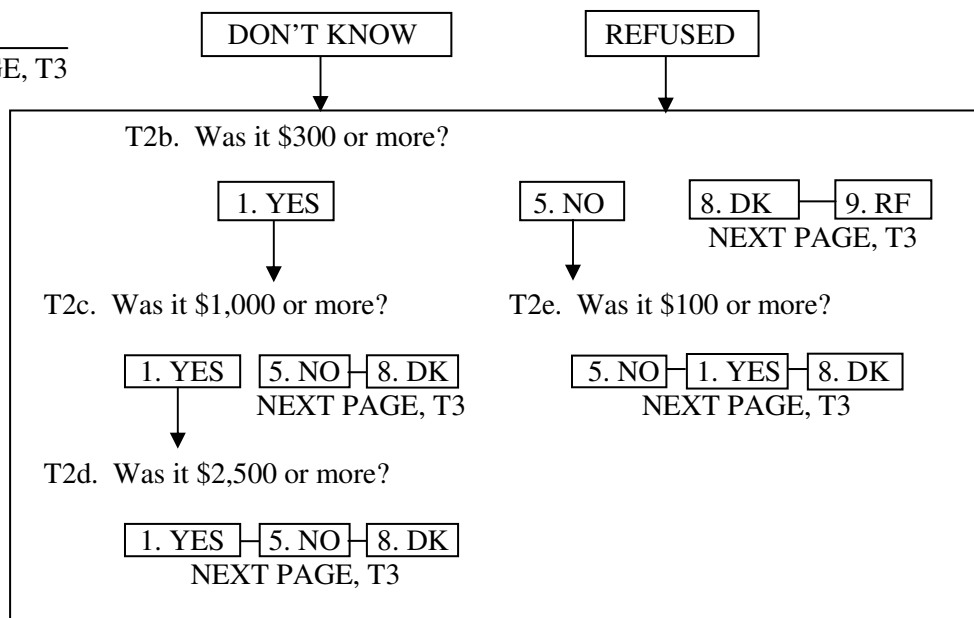


T2. Did you make any donations specifically for **religious purposes or spiritual development**, for example to a church, synagogue, mosque, TV or radio ministry? Please do not include donations to schools, hospitals, and other charities run by religious organizations. I will be asking you about those donations next.



T2a. Altogether, what was the total dollar value of all donations you [and your family] made **in 2000** towards **religious purposes**?

\$ _____
NEXT PAGE, T3



[IF T2= 1]

T3. Not counting the donations you just told me about, (during 2000) did you [or anyone in your family] donate to any organization that served a **combination of purposes**? For example, the United Way, the United Jewish Appeal, the Catholic Charities, or your local community foundation?

[ELSE, T2= 5, DK, RF]

T3. (During 2000) did you [or anyone in your family] donate to any organization that served a **combination of purposes**? For example, the United Way, the United Jewish Appeal, the Catholic Charities, or your local community foundation?

1. YES

5. NO

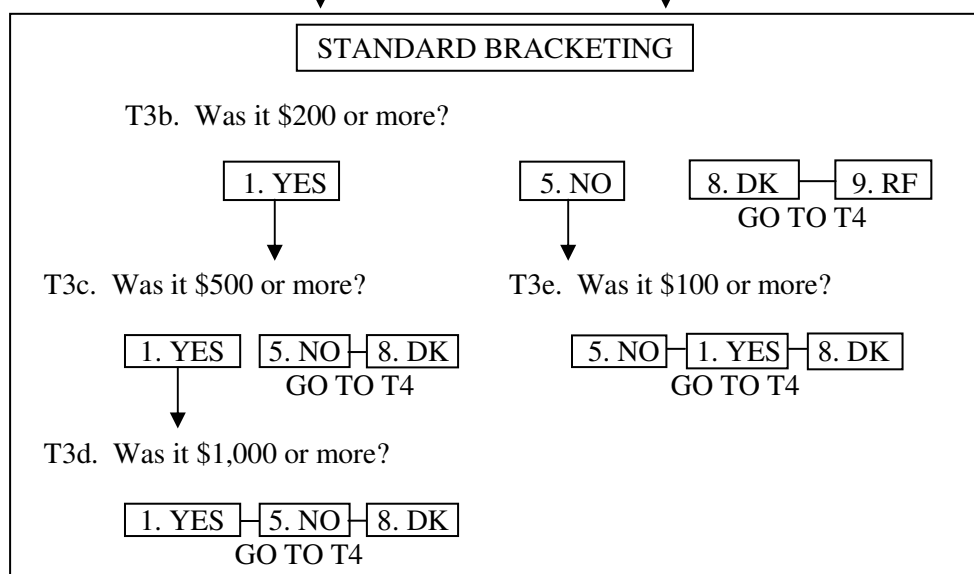
→ GO TO T4

T3a. (Altogether,) what was the total dollar value of all donations you [and your family] made **in 2000** towards **combined purpose funds**?

\$ _____
GO TO T4

DON'T KNOW

REFUSED



[IF T2= 1, OR T3= 1]

T4. Not counting the donations you just told me about, did you [or anyone in your family] make any donations (during 2000) to organizations that **help people in need of food, shelter, or other basic necessities**?

[ELSE]

T4. Did you [or anyone in your family] make any donations (during 2000) to organizations that **help people in need of food, shelter, or other basic necessities**?

1. YES

5. NO

→ NEXT PAGE, T5

T4a. What was the total dollar value of all donations you [and your family] made **in 2000** to organizations that **help people in need of basic necessities**?

\$ _____
NEXT PAGE, T5

DON'T KNOW

REFUSED

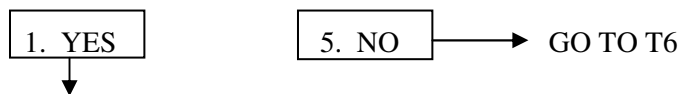
STANDARD BRACKETING, T4b-T4e, THEN NEXT PAGE, T5

[IF T2= 1, OR T3= 1, OR T4= 1]

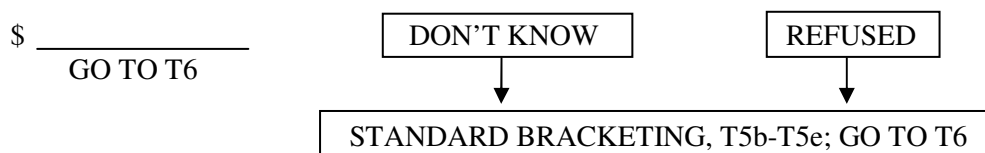
T5. Not counting the donations you just told me about, did you [or anyone in your family] make donations (during 2000) to **health care or medical research** organizations? For example, to hospitals, nursing homes, mental health facilities, cancer, heart and lung associations, or telethons?

[ELSE]

T5. Did you [or anyone in your family] make donations (during 2000) to **health care or medical research** organizations? For example, to hospitals, nursing homes, mental health facilities, cancer, heart and lung associations, or telethons?



T5a. What was the total dollar value of all donations you [and your family] made **in 2000** towards **health care or medical research** organizations?

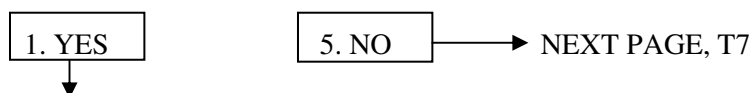


[IF T2= 1, OR T3= 1, OR T4= 1, OR T5= 1]

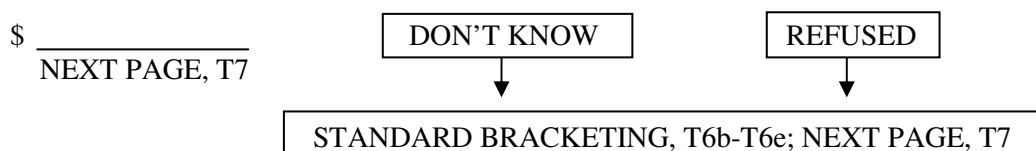
T6. Not counting the donations you just told me about, did you [or anyone in your family] make donations (during 2000) towards **educational** purposes? For example, to colleges, grade schools, PTAs, libraries, or scholarship funds? Please do not include direct tuition payments for you or other family members.

[ELSE]

T6. Did you [or anyone in your family] make donations (during 2000,) towards **educational** purposes? For example, to colleges, grade schools, PTAs, libraries, or scholarship funds? Please do not include direct tuition payments for you or other family members.



T6a. What was the total dollar value of all donations you [and your family] made **in 2000** towards **educational** purposes?



[IF T2= 1, OR T3= 1, OR T4= 1, OR T5= 1, OR T6= 1]

T7. Not counting the donations you just told me about, (during 2000,) did you [or anyone in your family] make donations of money, assets, or property to charitable organizations with purposes **other than** those we just talked about? For example, to...

[ELSE]

T7. (During 2000,) did you [or anyone in your family] make donations of money, assets, or property to charitable organizations with purposes **other than** those we just talked about? For example to...

IWER: READ AND ENTER ANSWER FOR EACH ITEM BELOW.

a. Youth and family services?	1. YES	5. NO	8. DK 9. RF
b. Arts, culture, and ethnic awareness?	1. YES	5. NO	8. DK 9. RF
c. Improving neighborhoods or communities?	1. YES	5. NO	8. DK 9. RF
d. Preserving the environment?	1. YES	5. NO	8. DK 9. RF
e. International aid or world peace?	1. YES	5. NO	8. DK 9. RF
f. Any other charitable purpose or organization we did not mention?	1. YES	5. NO	8. DK 9. RF

GO TO CKPT 1

T7g. What was the main purpose or cause supported by that organization? (AO)
Please tell me a little more about that. What do these organizations do?

[OPEN-ENDED ANSWER]

CATI CHECKPOINT - DONATION TO OTHER PURPOSE

PER ITEM T7a-T7f ABOVE

1. ANY ITEM T7a-T7f IS "1. YES"

5. ALL OTHERS

→ NEXT PAGE, T8

T7h. What was the total dollar value of all donations you [and your family] made **in 2000** towards (this last purpose/these last purposes)?

[IWER: READ PURPOSES DISPLAYED BELOW.]

[ITEMS T7a-T7f CODED "1. YES" ARE DISPLAYED BELOW]

Youth and family services, etc.

\$ _____
NEXT PAGE, T8

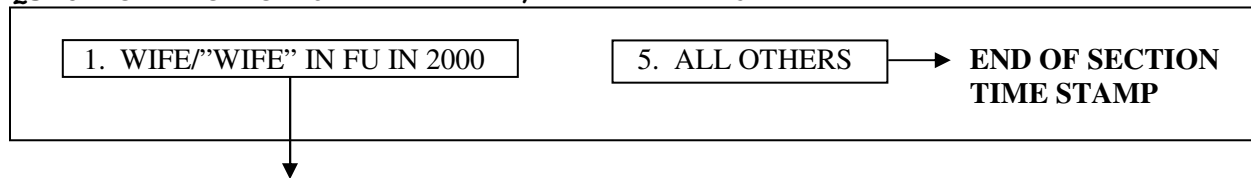
DON'T KNOW

REFUSED

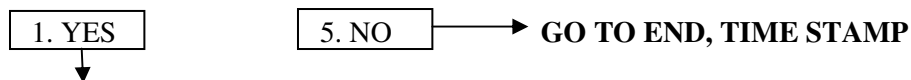
STANDARD BRACKETING, T7i-T7l, THEN NEXT PAGE, T6

[Q3154 TIME STAMP]

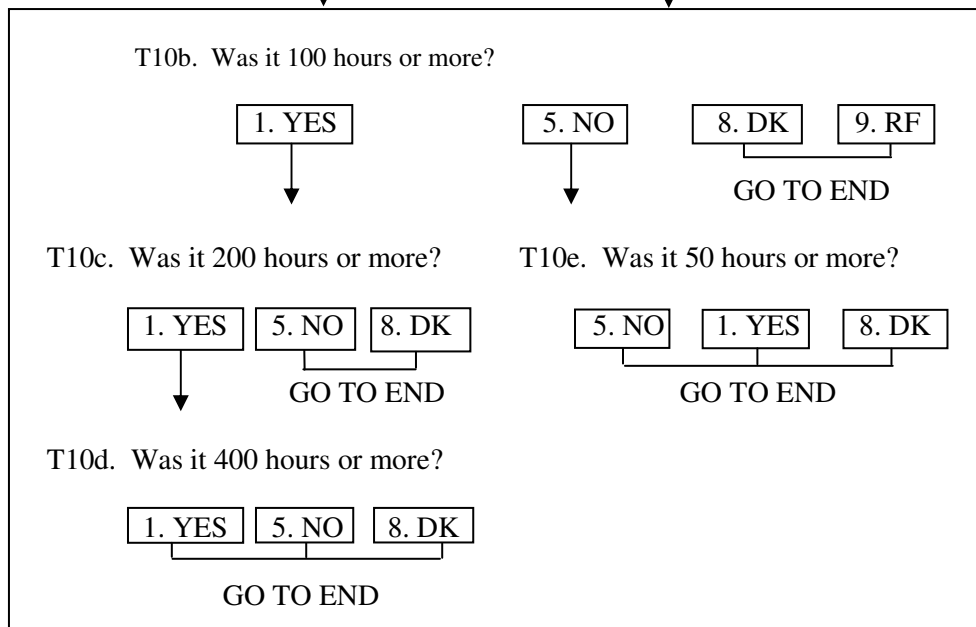
Q3164 CATI CHECKPOINT - WIFE/"WIFE" IN FU



T10. **During 2000**, did [WIFE/"WIFE" NAME/you]² do any volunteer work through organizations that totaled **10 hours or more**?



T10a. **Altogether**, how many hours did (she/you) spend in volunteer activity during 2000?



T11. How many hours of that volunteer time, or what percent, did (she/you) spend **helping people in need of food, shelter, or other basic necessities**?

_____ HOURS HELPING OR _____ PERCENT OF VOLUNTEER TIME

Q3198 END OF SECTION TIME STAMP

² These questions are about the Wife/"Wife". The application fills the question wording with either "Wife's"/"Wife's" first name depending upon who is Respondent.