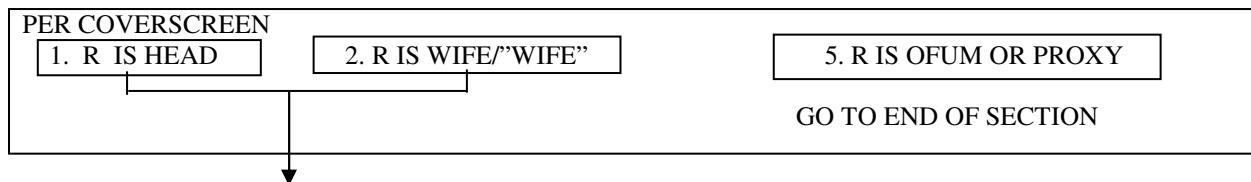


Panel Study of Income Dynamics, 2003
Generosity Questions, pages 126-158, which follow this page.
From <http://simba.isr.umich.edu/Zips/ZipMain.aspx>

SECTION M PHILANTHROPY MODULE

[Time Measurement at end of Section KL]

CATI CHECKPOINT – RESPONDENT IS HEAD/WIFE/”WIFE”



Section M: Philanthropy

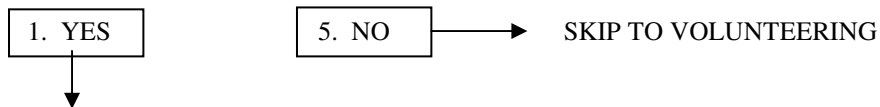
In this next to the last section, we will be talking about donations of time and money to charitable organizations.

Charitable organizations include religious or non-profit organizations that help those in need or that serve and support the public interests. They range in size from national organizations like the United Way and the American Red Cross down to local community organizations. They serve a variety of purposes such as religious activity, helping people in need, health care and medical research, education, arts, environment, and international aid. Our definition of charity **does not include** political contributions.

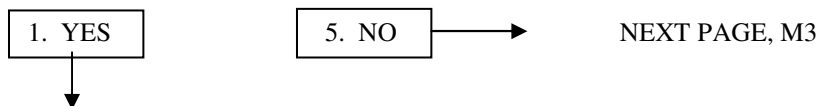
Donations include any gifts of money, assets, or property made directly to the organization, through payroll deduction, or collected by other means on behalf of the charity. This interview is limited to donations made during the calendar year 2002.

[GIVING TO CHARITABLE ORGANIZATIONS]

M1. **During the year 2002**, did you [or anyone in your family] **donate** money, assets, or property/goods, with a combined value of **more than \$25** to religious or charitable organizations?

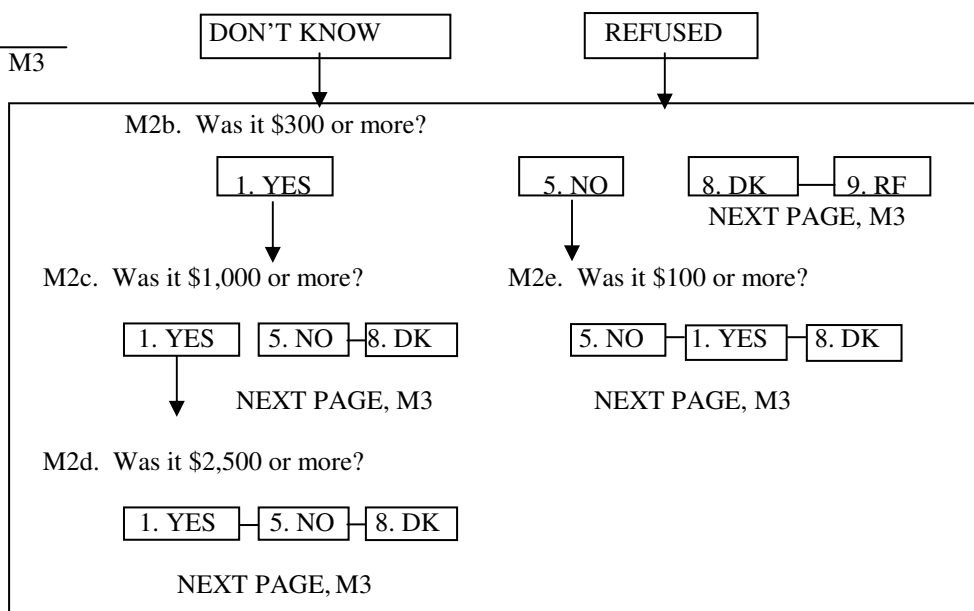


M2. Did you make any donations specifically for **religious purposes or spiritual development**, for example to a church, synagogue, mosque, TV or radio ministry? Please do not include donations to schools, hospitals, and other charities run by religious organizations. I will be asking you about those donations next.



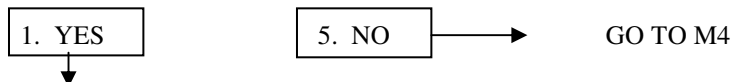
M2a. Altogether, what was the total dollar value of all donations you [and your family] made **in 2002** towards **religious purposes**?

\$ _____
NEXT PAGE, M3



[IF M2= 1]

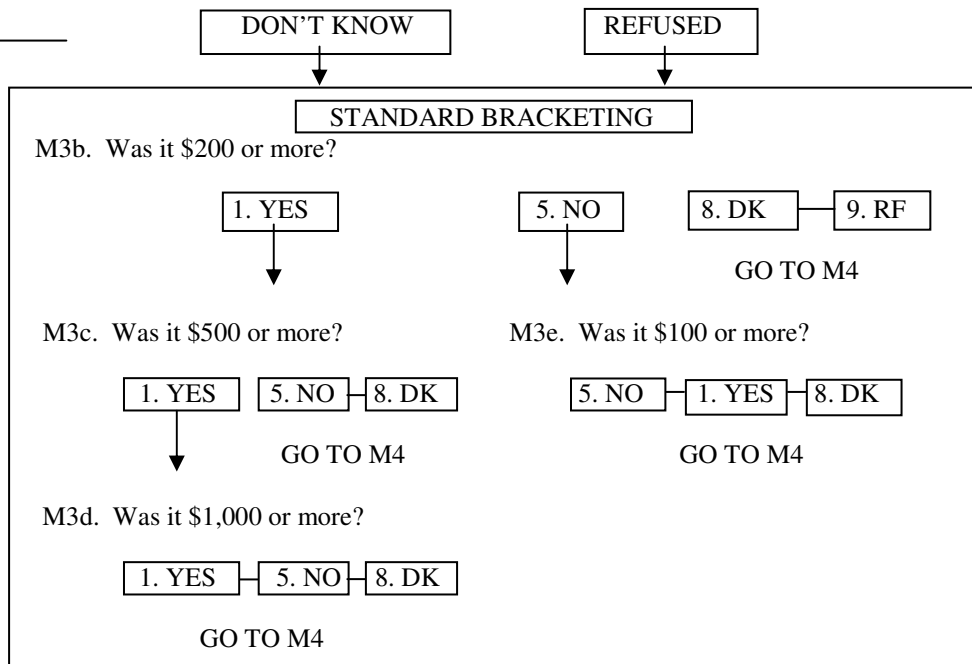
M3. (Not counting the donations you just told me about, during 2002) did you [or anyone in your family] donate to any organization that served a **combination of purposes**? For example, the United Way, the United Jewish Appeal, the Catholic Charities, or your local community foundation?



[ELSE, M2= 5, DK, RF]

M3. (During 2002) did you [or anyone in your family] donate to any organization that served a **combination of purposes**? For example, the United Way, the United Jewish Appeal, the Catholic Charities, or your local community foundation?

\$ _____
GO TO M4

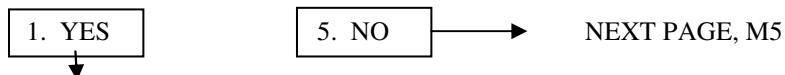


[IF M2= 1, OR M3= 1]

M4. Not counting the donations you just told me about, did you [or anyone in your family] make any donations (during 2002) to organizations that **help people in need of food, shelter, or other basic necessities**?

[ELSE]

M4. Did you [or anyone in your family] make any donations (during 2002) to organizations that **help people in need of food, shelter, or other basic necessities**?



M4a. What was the total dollar value of all donations you [and your family] made **in 2002** to organizations that **help people in need of basic necessities**?

\$ _____
NEXT PAGE, M5

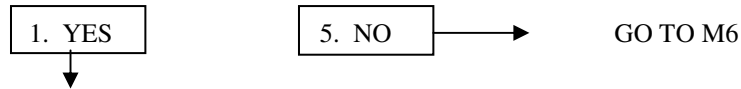


[IF M2= 1, OR M3= 1, OR M4= 1]

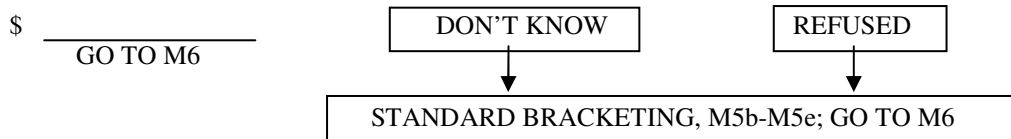
M5. (Not counting the donations you just told me about,) did you [or anyone in your family] make donations (during 2002) to **health care or medical research** organizations? For example, to hospitals, nursing homes, mental health facilities, cancer, heart and lung associations, or telethons?

[ELSE]

M5. Did you [or anyone in your family] make donations (during 2002) to **health care or medical research** organizations? For example, to hospitals, nursing homes, mental health facilities, cancer, heart and lung associations, or telethons?



M5a. What was the total dollar value of all donations you [and your family] made **in 2002** towards **health care or medical research** organizations?

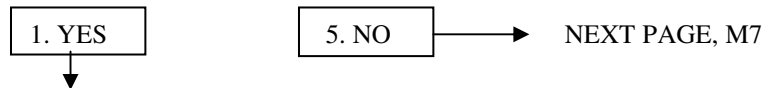


[IF M2= 1, OR M3= 1, OR M4= 1, OR M5= 1]

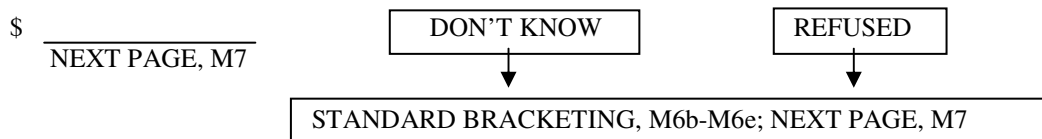
M6. (Not counting the donations you just told me about,) did you [or anyone in your family] make donations (during 2002) towards **educational** purposes? For example, to colleges, grade schools, PTAs, libraries, or scholarship funds? Please do not include direct tuition payments for you or other family members.

[ELSE]

M6. Did you [or anyone in your family] make donations (during 2002,) towards **educational** purposes? For example, to colleges, grade schools, PTAs, libraries, or scholarship funds? Please do not include direct tuition payments for you or other family members.



M6a. What was the total dollar value of all donations you [and your family] made **in 2002** towards **educational** purposes?



[Time Measurement]

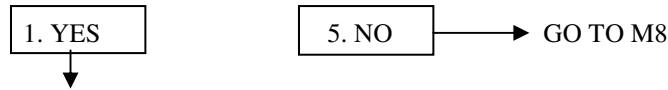
[M7-M7e replace 2001 question T7a.]

[IF M2= 1, OR M3= 1, OR M4= 1, OR M5= 1, OR M6= 1]

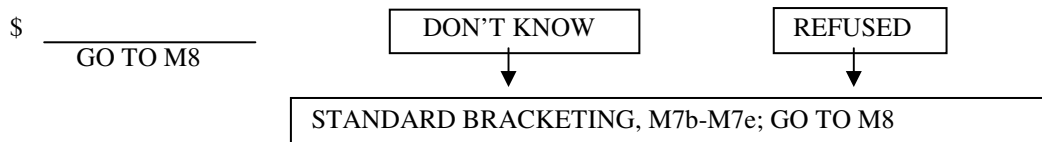
M7. Not counting the donations you just told me about, (during 2002,) did you [or anyone in your family] make donations to organizations that provide **youth or family services**? Such as to scouting, boys' and girls' clubs, sports leagues, Big Brothers or Sisters, foster care, or family counseling?

[ELSE]

M7. (During 2002,) did you [or anyone in your family] make donations to organizations that provide **youth or family services**? Such as to scouting, boys' and girls' clubs, sports leagues, Big Brothers or Sisters, foster care, or family counseling?



M7a. What was the total dollar value of all donations you [and your family] made **in 2002** towards **youth and family services** purposes?



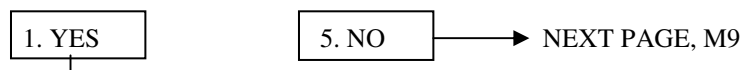
[Time Measurement]

[IF M2= 1, OR M3= 1, OR M4= 1, OR M5= 1, OR M6= 1 OR M7=1]

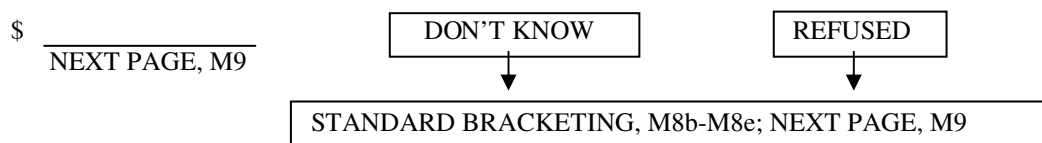
M8. (Not counting the donations you just told me about, during 2002,) did you [or anyone in your family] make donations to organizations that support or promote the **arts, culture, or ethnic awareness**? Such as, to a museum, theatre, orchestra, public broadcasting, or ethnic cultural awareness?

[ELSE]

M8. (During 2002,) did you [or anyone in your family] make donations to organizations that support or promote the **arts, culture, or ethnic awareness**? Such as, to a museum, theatre, orchestra, public broadcasting, or ethnic cultural awareness?



M8a. What was the total dollar value of all donations you [and your family] made **in 2002** towards the **arts, culture, or ethnic awareness**?



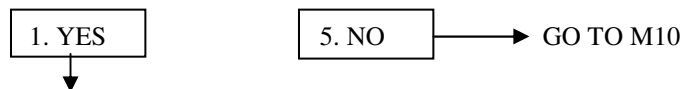
[Time Measurement]

[IF M2= 1, OR M3= 1, OR M4= 1, OR M5= 1, OR M6= 1, OR M7=1, OR M8=1]

M9. Not counting the donations you just told me about, (during 2002,) did you [or anyone in your family] make donations to organizations that **improve neighborhoods and communities**? Such as, to community associations or service clubs?

[ELSE]

M9. (During 2002,) did you [or anyone in your family] make donations to organizations that **improve neighborhoods and communities**? Such as, to community associations or service clubs?



M9a. What was the total dollar value of all donations you [and your family] made **in 2002** towards **improving neighborhoods and communities**?

\$ _____
GO TO M10

DON'T KNOW
↓

REFUSED
↓

STANDARD BRACKETING, M9b-M9e; GO TO M10

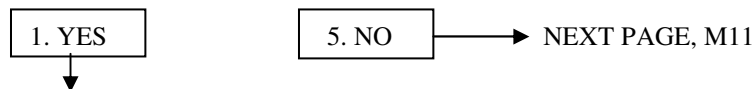
[Time Measurement]

[IF M2= 1, OR M3= 1, OR M4= 1, OR M5= 1, OR M6= 1, OR M7=1, OR M8=1, OR M9=1]

M10. (Not counting the donations you just told me about, during 2002,) did you [or anyone in your family] make donations to organizations that **preserve the environment**? Such as, for conservation efforts, animal protection, or parks?

[ELSE]

M10. (During 2002,) did you [or anyone in your family] make donations to organizations that **preserve the environment**? Such as, for conservation efforts, animal protection, or parks?



M10a. What was the total dollar value of all donations you [and your family] made **in 2002** towards **preserving the environment**?

\$ _____
NEXT PAGE, M11

DON'T KNOW
↓

REFUSED
↓

STANDARD BRACKETING, M10b-M10e; NEXT PAGE, M11

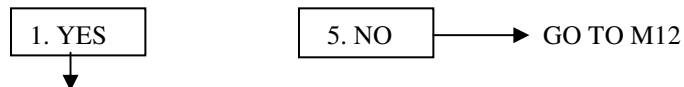
[Time Measurement]

[IF M2=1, OR M3=1, OR M4=1, OR M5=1, OR M6=1, OR M7=1, OR M8=1, OR M9=1, OR M10=1]

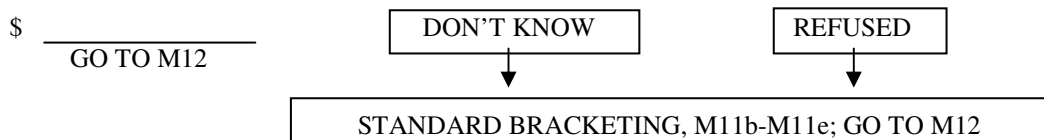
M11. (Not counting the donations you just told me about, during 2002,) did you [or anyone in your family] make donations to organizations that provide **international aid or promote world peace**? Such as, international children's funds, disaster relief, or human rights?

[ELSE]

M11. (During 2002,) did you [or anyone in your family] make donations to organizations that provide **international aid or promote world peace**? Such as, international children's funds, disaster relief, or human rights?



M11a. What was the total dollar value of all donations you [and your family] made **in 2002** towards **providing international aid or promoting world peace**?



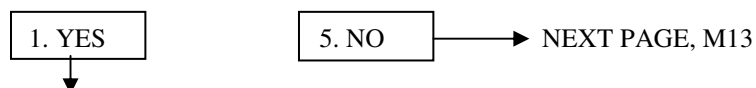
[Time Measurement]

[IF M2=1, OR M3=1, OR M4=1, OR M5=1, OR M6=1, OR M7=1, OR M8=1, OR M9=1, OR M10=1 OR M11=1]

M12. Not counting the donations you just told me about, did you [or anyone in your family] make donations (during 2002) of money, assets, or property to charitable organizations with purposes **other than** those we just talked about?

[ELSE]

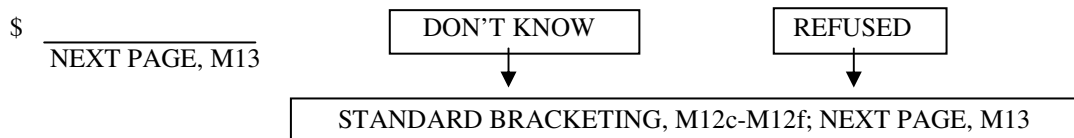
M12. (During 2002,) did you [or anyone in your family] make donations of money, assets, or property to charitable organizations with purposes **other than** those we just talked about?



M12a. What was the main purpose or cause supported by that organization? (AO)
Please tell me a little more about that. What do these organizations do?

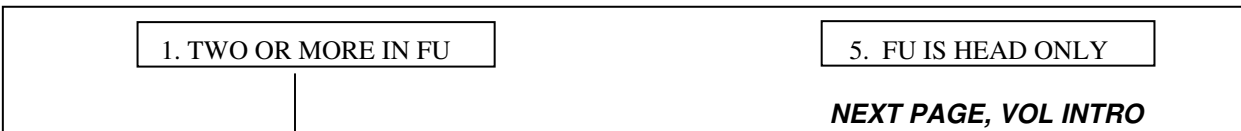
[OPEN-ENDED ANSWER, STRING FIELD] (*vets orgns, police/firefighters, assoc., historical/memorial societies, animal shelters*)

M12b. What was the total dollar value of all donations you [and your family] made **in 2002** towards **(this/these) last purpose(s)**?



[Time Measurement]

CAI CHECKPOINT – FU SIZE TWO OR MORE



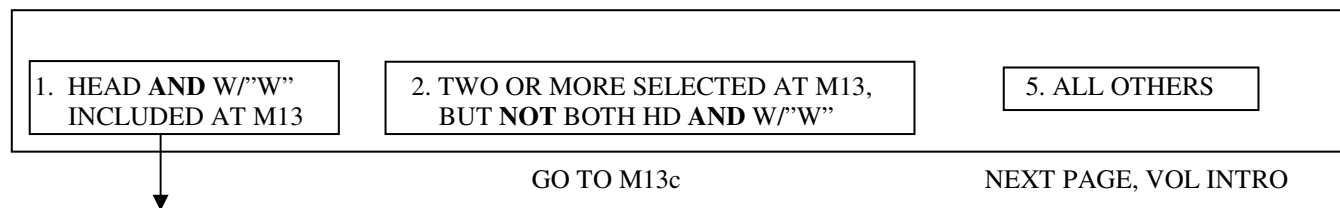
M13. We have been talking about donations that your family (as a whole) made to charitable purposes and organizations. However, individual family members, [sometimes even children] may decide how much to give to different charities. Who in your family was involved in decisions about how much support to give individual charities in 2002?

CHECK all that apply

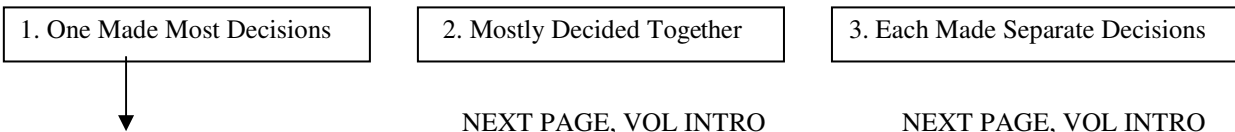
- 01 Male Head John 36
- 02 Wife Joan 35
- 03 Father Jim 57
- 04 Son John 16

[Response code built from list of current FU members and those FU Members in 2001 who have since moved out or died, AgeIwDate GE6.]

CAI CHECKPOINT – TWO OR MORE PERSONS SELECTED AT M13



M13a. When you and [SPOUSE'S/'WIFE'S" NAME] made decisions about supporting charities, did **one of you** make most of the decisions about how much to give each charity, did you **mostly decide together**, or did you **each make your own separate decisions**?

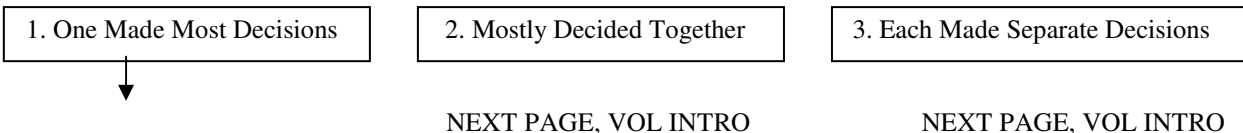


M13b. Who was that?

- 01 Male Head [Response options limited to Head and Wife/"Wife"]
- 02 Wife

NEXT PAGE, VOL INTRO

M13c. When [you/they] made decisions about supporting charities, did **one of [you/them]** make most of the decisions about how much to give each charity, did [you/they] **mostly decide together**, or did [you/they] **each make [your/their] own separate decisions**?



M13d. Who was that?

- 01 Male Head Giver [Response codes built from selection at M13]
- 03 Father Jim Giver

[Time Measurement]

Unlike other sections of the Iw, this series references the Respondent first and then their spouse, if any.]

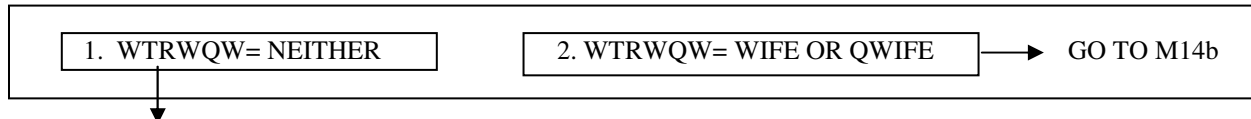
VOLUNTEERING INTRODUCTION

Lets talk about volunteering through the kinds of organizations we've been discussing. By "volunteering" we don't mean **just belonging** to an organization. We mean doing **unpaid work**.

Some volunteering is **ongoing**, such as coaching, helping at school, serving on committees, building and repairing, providing health care or emotional support, counseling, delivering food, doing office work, and weekly church work. Other volunteering is **occasional**, like neighborhood clean-ups, fund raising drives, and special activities during the holidays.

[Time Measurement]

CAI CHECKPOINT – HEAD ONLY OR HEAD AND WIFE/"WIFE" IN FU

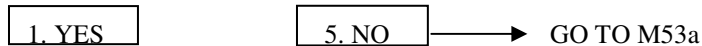


[HEAD/R ONLY]

M14. In the **last month**, did you do **any** volunteer activity through organizations?

TYESNO

M14a. Now think about last year, January through December of **2002**. Did you do **any** volunteer activity through organizations?

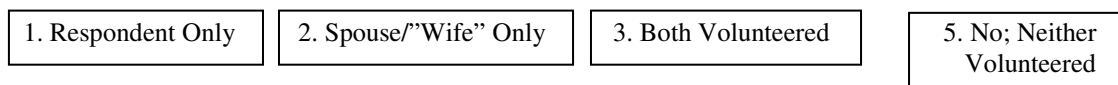


NEXT PAGE, M15a

[R AND SPOUSE]

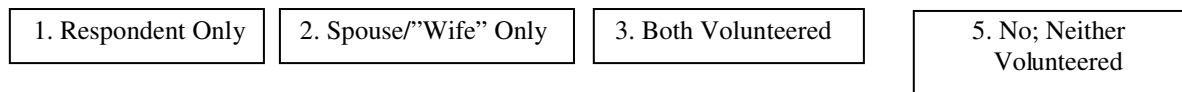
M14b. In the **last month**, did **either** you or [SPOUSE'S NAME] do **any** volunteer activity through organizations?

IF "YES": Was that just **you**, just [SPOUSE NAME], or **both** of you who volunteered (last month)?



M14c. Now think about last year, January through December of **2002**. Did **either** you or [SPOUSE'S NAME] do **any** volunteer activity through organizations?

IF "YES": Was that just **you**, just [SPOUSE NAME], or **both** of you who volunteered (last year)?



NEXT PAGE, M14d CKPT

GO TO M53a

[Time Measurement]

M14d. CHECKPOINT – WHO VOLUNTEERED LAST YEAR

PER M14c <div style="border: 1px solid black; padding: 5px; width: fit-content; margin: 0 auto;">1. Respondent Only</div>	<div style="border: 1px solid black; padding: 5px; width: fit-content; margin: 0 auto;">2. Spouse/"Wife" Only</div>	<div style="border: 1px solid black; padding: 5px; width: fit-content; margin: 0 auto;">3. Both Volunteered</div>
NEXT PAGE, M17 CKPT		

[R's Religious Volunteering]

M15a. **During 2002**, how often did you yourself do volunteer activity at or through your **church, synagogue, or mosque**, such as serving on a committee, assisting in worship, teaching, or helping others through programs organized by your place of worship? Please do not include volunteering through schools, hospitals, and other charities run by religious organizations. I will be asking you about that volunteering next.

_____ *M15a* _____ TIMES PER _____ *M15b* _____ (TPERDAY)

NOTE: TPERDAY= Day, Week, Two Weeks, Month, Year, Other (Specify:)

IF M15a = (ZERO, DK, RF), NEXT PAGE M17 CKPT; ELSE CONTINUE WITH M15c:

M15c. Do you refer to your place of worship as a church, synagogue, mosque, temple, or by some other name?

1. Church
2. Synagogue
3. Mosque
4. Temple
7. Other (SPECIFY): _____ [*STRING 20 CHAR, specified by the R.*]

M15d. How much time would you **typically** spend during **one** of those volunteering sessions?

_____ *M15d* _____ Hours _____ *M15e* _____ Minutes

IF M15b=Other (Specify:) OR M15d-M15e = (DK, RF), CANNOT CALCULATE M15TotHrs. SKIP TO NEXT PAGE, M15g. ELSE CONTINUE

CAI calculation of annualized volunteer hours for use in M15f: $M15TotHrs = NTimes \times NHours$,

*$NTimes = M15a \times$ (number of *M15b* units in a year) and $NHours = M15d + (M15e/60)$*

Example: Three times per week, 2 hrs each time;

$M15TotHrs = NTimes \times NHours = 3 \times 52 \times 2 = 312$.

M15f. Over **all of 2002**, that would have been (about) _____ *M15TotHrs* _____ hours of volunteering at or through your *RELNAME*. Does that sound **about right**, or did you volunteer **more** hours or **fewer** hours?

- | | | | |
|----------------|------------------------|-------|-----------------|
| 1. FEWER | NEXT PAGE, M15g | 8. DK | NEXT PAGE, M15g |
| 2. ABOUT RIGHT | NEXT PAGE, M15h | 9. RF | NEXT PAGE, M15g |
| 3. MORE | NEXT PAGE, M15g | | |

M15g. Then (during 2002) how many hours **altogether** would you say you volunteered at or through your *RELNAME*?

IF DK or RF: What is your best estimate?
 _____ HRS

[Time Measurement]

[IF M15g IS NOT NR THEN CONTINUE TO M15h. ELSE SKIP TO M17 CKPT]

IF *NTIMES* > 6 ASK *M15h-i*; ELSE SKIP TO M17 CKPT

M15h. Are you including the **occasional** times when you might have done a lot of volunteer activity on a **single day**?

TYESNO

IF *M15h* = (YES, DK, RF) SKIP TO M17 CKPT; ELSE (*M15h*=NO) CONTINUE WITH *M15i*

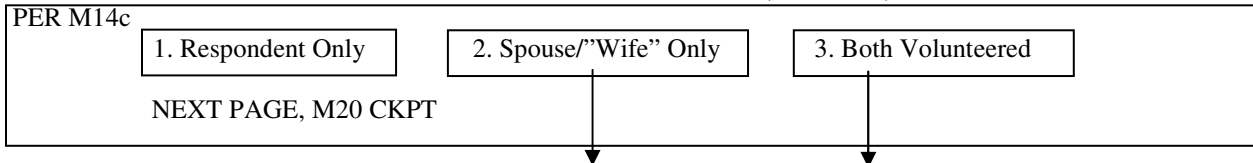
M15i. If you add this occasional volunteering time to your regular volunteering, [*M15TotHrs*] hours, how many hours **altogether** would you say you volunteered at or through your *RELNAME*?

PROBE answer if less than or equal to regular volunteering hours: [*M15TotHrs*]
 IF DK, RF: What is your best estimate?

_____ HRS

[Time Measurement]

M17. CHECKPOINT – WHO VOLUNTEERED LAST YEAR: R, SPOUSE, OR BOTH



[SPOUSE'S - RELIGIOUS VOLUNTEERING]

M18a. During 2002, how often did [SPOUSE NAME] do volunteer activity at or through [his/her] **church, synagogue, or mosque**, (such as serving on a committee, assisting in worship, teaching, or helping others through programs organized by [his/her] place of worship)? Please do not include any volunteering through schools, hospitals, and other charities run by religious organizations.

_____ *M18a* TIMES PER _____ *M18b* (TPERDAY)

IF *M18a* = (ZERO, DK, RF), NEXT PAGE M20 CKPT; ELSE CONTINUE TO M18c.

M18c. Does [she/he] refer to [her/his] place of worship as a church, synagogue, mosque, temple, or by some other name?

[*TRELNAME*]

M18d. How much time would [she/he] **typically** spend during **one** of those volunteering times?

_____ *M18d* Hours _____ *M18e* Minutes

IF M18b=Other (Specify:) OR M18d-M18e = (DK, RF), SKIP TO M18g. ELSE CONTINUE

CAI calculation of annualized volunteer hours for use in M18f:

$$M18TotHrs = NTimes \times Nhours = M18a * (M18a/YEAR) * (M18d + M18e/60)$$

M18f. (Over **all of 2002**), that would have been (about) _____ *M18TotHrs* hours of volunteering at or through [her/his] *RELNAME*. Does that sound **about right**, or did [she/he] volunteer **more** hours or **fewer** hours?

- | | | | |
|----------------|---------------------|-------|------------------|
| 1. FEWER. | CONTINUE TO M18g | 8. DK | CONTINUE TO M18g |
| 2. ABOUT RIGHT | SKIP TO M18h | 9. RF | CONTINUE TO M18g |
| 3. MORE. | CONTINUE TO M18g | | |

M18g. Then (during 2002) how many hours **altogether** would you say [she/he] volunteered at or through [her/his] *RELNAME*?

IF DK, RF: What is your best estimate?

_____ HRS

[Time Measurement]

[IF M18g IS NOT NR THEN CONTINUE TO M18h. ELSE SKIP TO M20 CKPT]

IF NTIMES > 6 CONTINUE TO M18h-i; ELSE, SKIP TO M20 CKPT

M18h. Are you including the **occasional** times when [she/he] might have done a lot of volunteer activity on a **single day**?

TYESNO

IF M18h=NO, CONTINUE WITH M18i; ELSE (M18h = YES, DK, RF) SKIP TO M20 CKPT.

M18i. If you add this occasional volunteering time to [her/his] regular volunteering, [*M18TotHrs*] hours, how many hours **altogether** would you say [she/he] volunteered at or through [her/his] *RELNAME*?

PROBE answer if less than or equal to regular volunteering hours: [*M18TotHrs*]

IF DK, RF: What is your best estimate?

_____ HRS

[Time Measurement]

M20. CHECKPOINT – WHO VOLUNTEERED LAST YEAR: R, SPOUSE, OR BOTH

PER M14c

1. Respondent Only

2. Spouse/"Wife" Only

3. Both Volunteered

NEXT PAGE, M21a

PAGE 14, M22 CKPT

NEXT PAGE, M21a

*[R'S VOLUNTEERING FOR CHILDREN AND YOUTH]**[IF R VOLUNTEERED AT M15a (G0)]*

M21a. Not counting the volunteering you just told me about (during 2002), how often did you yourself volunteer through organizations for **children and youth**, such as helping at school, cooking for a bake sale, coaching, or being a youth leader?

[ELSE, IF M15a = ZERO, DK, RF]

M21a. During 2002, how often did you yourself volunteer through organizations for **children and youth**, such as helping at school, cooking for a bake sale, coaching, or being a youth leader?

_____ *M21a* TIMES PER _____ *M21b* (TPERDAY)

IF M21a = (ZERO, DK, RF), NEXT PAGE M22 CKPT; ELSE CONTINUE TO M21c.

M21c. How much time would you **typically** spend during **one** of those volunteering sessions?

_____ *M21c* Hours _____ *M21d* Minutes

IF M21b=Other (Specify:) OR M21c-d = (DK, RF), CANNOT CALCULATE M21TotHrs. SKIP TO M21f. ELSE CONTINUE

CAI calculation of annualized volunteer hours for use in M21e:

$$M21TotHrs = NTimes \times NHours = M21a * (M21b/Year) * (M21c+(M21d/60))$$

M21e. Over **all of 2002**, that would have been (about) _____ *M21TotHrs* hours of volunteering at or through organizations for **children and youth**. Does that sound **about right**, or did you volunteer **more** hours or **fewer** hours?

- | | | | |
|----------------|---------------------|-------|------------------|
| 1. FEWER. | CONTINUE TO M21f | 8. DK | CONTINUE TO M21f |
| 2. ABOUT RIGHT | SKIP TO M21g | 9. RF | CONTINUE TO M21f |
| 3. MORE. | CONTINUE TO M21f | | |

M21f. Then (during 2002) how many hours **altogether** would you say you volunteered at or through organizations for **children and youth**?

IF DK or RF: What is your best estimate?

_____ HRS

[Time Measurement]

[IF M21f IS NOT NR, THEN CONTINUE TO M21g. ELSE, SKIP TO NEXT PAGE, M22 CKPT]

IF NTIMES > 6 ASK THE FOLLOWING; ELSE NEXT PAGE, M22 CKPT

M21g. Are you including the **occasional** times when you might have done a lot of volunteer activity on a **single day**?

TYESNO

IF M21g =NO, CONTINUE WITH M21h; ELSE (M21g =YES, DK, RF), SKIP TO M22 CKPT

M21h. If you add this occasional volunteering time to your regular volunteering, [M21TotHrs] hours, how many hours **altogether** would you say you volunteered at or through organizations for **children and youth**?

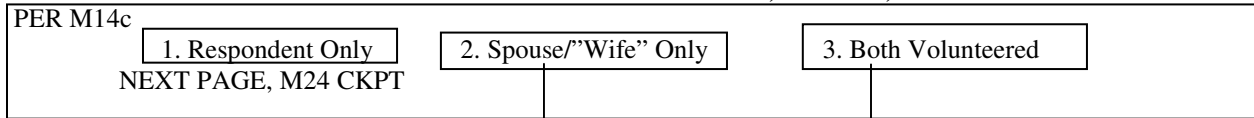
PROBE /RR/ answer if less than or equal to regular volunteering hours: [M21TotHrs]

IF DK, RF: What is your best estimate?

_____ HRS

[Time Measurement]

M22. CHECKPOINT – WHO VOLUNTEERED LAST YEAR: R, SPOUSE, OR BOTH



[SPOUSE VOLUNTEERING FOR CHILDREN AND YOUTH]

[IF SPOUSE VOLUNTEERED AT M18a (G0)]

M23a. (Not counting the volunteering you just told me about during 2002), how often did [SPOUSE NAME] volunteer through organizations for **children and youth**, such as helping at school, cooking for a bake sale, coaching, or being a youth leader?

[ELSE, IF M18a = ZERO, DK, RF]

M23a. During 2002, how often did [SPOUSE NAME] volunteer through organizations for **children and youth**, such as helping at school, cooking for a bake sale, coaching, or being a youth leader?

_____ M23a TIMES PER _____ M23b (TPERDAY)

IF M23a = (ZERO, DK, RF), NEXT PAGE M24 CKPT; ELSE CONTINUE TO M23c.

M23c. How much time would [she/he] **typically** spend during **one** of those volunteering sessions?

_____ M23c Hours _____ M23d Minutes

IF M23b=Other (Specify:) OR M23c-d = (DK, RF), CANNOT CALCULATE M23TotHrs. SKIP TO M23f. ELSE CONTINUE

CAI calculation of annualized volunteer hours for use in M23e:

$$M23TotHrs = NTimes \times NHours = M23a * (M23b/Year) * M23c + (M23d/60)$$

M23e. Over **all of 2002**, that would have been (about) M23TotHrs hours of volunteering at or through organizations for **children and youth**. Does that sound **about right**, or did [she/he] volunteer **more** hours or **fewer** hours?

- | | | | |
|----------------|---------------------|-------|------------------|
| 1. FEWER. | CONTINUE TO M23f | 8. DK | CONTINUE TO M23f |
| 2. ABOUT RIGHT | SKIP TO M23g | 9. RF | CONTINUE TO M23f |
| 3. MORE. | CONTINUE TO M23f | | |

M23f. Then (during 2002) how many hours **altogether** would you say [she/he] volunteered at or through organizations for **children and youth**?

IF DK or RF: What is your best estimate?

_____ HRS

[Time Measurement]

[IF M23f IS NOT NR, THEN CONTINUE TO M23g. ELSE, SKIP TO M24 CKPT]

IF NTIMES > 6 ASK THE FOLLOWING; ELSE SKIP TO M24 CKPT

M23g. Are you including the **occasional** times when [she/he] might have done a lot of volunteer activity on a **single day**?

TYESNO

IF M23g = (YES, DK, RF) SKIP TO M24 CKPT; ELSE (M23g=NO) CONTINUE WITH M23h

M23h. If you add this occasional volunteering time to [her/his] regular volunteering, [M23TotHrs] hours, how many hours **altogether** would you say [she/he] volunteered at or through organizations for **children and youth**?

PROBE /RR/ answer if less than or equal to regular volunteering hours: [M23TotHrs]

IF DK, RF: What is your best estimate?

_____ HRS

[Time Measurement]

M24. CHECKPOINT – WHO VOLUNTEERED LAST YEAR: R, SPOUSE, OR BOTH

PER M14c	1. Respondent Only	2. Spouse/"Wife" Only	3. Both Volunteered
	NEXT PAGE, M25a	GO TO M26 CKPT	NEXT PAGE, M25a

[R'S VOLUNTEERING TO HELP ELDERLY]

[IF R VOLUNTEERED AT M15a-b OR M21a-b]

M25a. (Not counting the volunteering you just told me about during 2002), how often did you volunteer through organizations for senior citizens, such as helping at a nursing home or a senior citizens center, providing emotional or social support, visiting, driving, or delivering food?

[ELSE]

M25a. During 2002, how often did you volunteer through organizations for senior citizens, such as helping at a nursing home or a senior citizens center, providing emotional or social support, visiting, driving, or delivering food?

 M25a TIMES PER M25b (TPERDAY)

IF M25a = (ZERO, DK, RF), NEXT PAGE M26 CKPT; ELSE CONTINUE TO M25c.

M25c. How much time would you **typically** spend during **one** of those volunteering sessions?

 M25c Hours M25d Minutes

IF M25b=Other (Specify:) OR M25c-d = (DK, RF), CANNOT CALCULATE M25TotHrs.
SKIP TO M25f. ELSE CONTINUE

CAI calculation of annualized volunteer hours for use in M25e:

$$M25TotHrs = NTimes \times NHours = M25a * (M25b/Year) * (M25c+(M25d/60))$$

M25e. Over **all of 2002**, that would have been (about) M25TotHrs hours of volunteering at or through organizations for **senior citizens**. Does that sound **about right**, or did you volunteer **more** hours or **fewer** hours?

- | | | | |
|----------------|------------------------|-------|------------------|
| 1. FEWER. | CONTINUE TO M25f | 8. DK | CONTINUE TO M25f |
| 2. ABOUT RIGHT | NEXT PAGE, M25g | 9. RF | CONTINUE TO M25f |
| 3. MORE. | CONTINUE TO M25f | | |

M25f. Then (during 2002) how many hours **altogether** would you say you volunteered at or through organizations for **senior citizens**?

IF DK or RF: What is your best estimate?

 HRS

[Time Measurement]

[IF M25f IS NOT NR, THEN CONTINUE TO M25g. ELSE, SKIP TO NEXT PAGE, M26 CKPT]

IF NTIMES > 6 ASK THE FOLLOWING; ELSE SKIP TO M26 CKPT

M25g. Are you including the **occasional** times when you might have done a lot of volunteer activity? on a **single day**?

TYESNO

IF M25g =NO, CONTINUE WITH M25h; ELSE (M25g =YES, DK, RF), SKIP TO M26 CKPT

M25h. If you add this occasional volunteering time to your regular volunteering, [M25TotHrs] hours, how many hours **altogether** would you say you volunteered at or through organizations for **senior citizens**?

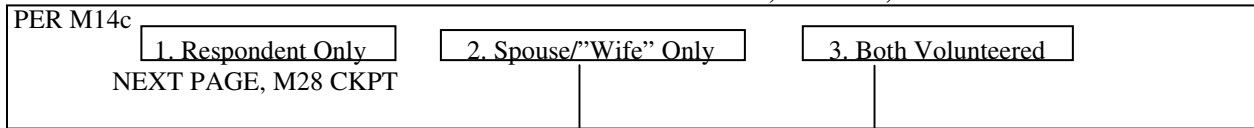
PROBE /RR/ answer if less than or equal to regular volunteering hours: [M25TotHrs]

IF DK, RF: What is your best estimate?

_____ HRS

[Time Measurement]

M26. CHECKPOINT – WHO VOLUNTEERED LAST YEAR: R, SPOUSE, OR BOTH



[SPOUSE VOLUNTEERING TO HELP ELDERLY]

[IF SPOUSE VOLUNTEERED AT M18a-b OR M23a-b]

M27a. (Not counting the volunteering you just told me about during 2002), how often did [SPOUSE NAME] volunteer through organizations for senior citizens, such as helping at a nursing home or a senior citizens center, providing emotional or social support, visiting, driving, or delivering food?

[ELSE]

M27a. During 2002 how often did [SPOUSE NAME] volunteer through organizations for senior citizens, such as helping at a nursing home or a senior citizens center, providing emotional or social support, visiting, driving, or delivering food?

_____ M27a TIMES PER _____ M27b (TPERDAY)

IF M27a = (ZERO, DK, RF), NEXT PAGE M28 CKPT; ELSE CONTINUE TO M27c.

M27c. How much time would [she/he] **typically** spend during **one** of those volunteering sessions?

_____ M27c Hours _____ M27d Minutes

IF M27b=Other (Specify:) OR M27c-d = (DK, RF), CANNOT CALCULATE M27TotHrs. SKIP TO NEXT PAGE, M27f. ELSE CONTINUE

CAI calculation of annualized volunteer hours for use in M27e:

$$M27TotHrs = NTimes \times NHours = M27a * (M27b/Year) * (M27c+(M27d/60))$$

M27e. Over **all of 2002**, that would have been (about) M27TotHrs hours of volunteering at or through organizations for **senior citizens**. Does that sound **about right**, or did [she/he] volunteer **more** hours or **fewer** hours?

- | | | | |
|----------------|---------------------|-------|------------------|
| 1. FEWER. | CONTINUE TO M27f | 8. DK | CONTINUE TO M27f |
| 2. ABOUT RIGHT | SKIP TO M27g | 9. RF | CONTINUE TO M27f |
| 3. MORE. | CONTINUE TO M27f | | |

M27f. Then (during 2002) how many hours **altogether** would you say [she/he] volunteered at or through organizations for **senior citizens**?

IF DK or RF: What is your best estimate?

_____ HRS

[Time Measurement]

[IF M27f IS NOT NR, THEN CONTINUE TO M7g. ELSE, SKIP TO M28 CKPT]

IF NTIMES > 6 ASK THE FOLLOWING; ELSE GO TO M28 CKPT

M27g. Are you including the **occasional** times when [she/he] might have done a lot of volunteer activity on a **single day**?

TYESNO

IF M27g =NO, CONTINUE WITH M27h; ELSE (M27g =YES, DK, RF), GO TO M28 CKPT

M27h. If you add this occasional volunteering time to [her/his] regular volunteering, [M27TotHrs] hours, how many hours **altogether** would you say [she/he] volunteered at or through organizations for **senior citizens**?

PROBE /RR/ answer if less than or equal to regular volunteering hours: [M27TotHrs]

IF DK, RF: What is your best estimate?

_____ HRS

[Time Measurement]

M28. CHECKPOINT – WHO VOLUNTEERED: R, SPOUSE, OR BOTH

PER M14c		
1. Respondent Only	2. Spouse/"Wife" Only	3. Both Volunteered
NEXT PAGE, M29a	GO TO M30 CKPT	NEXT PAGE, M29a

[R'S VOLUNTEERING TO HELP PEOPLE IN POOR HEALTH]

[IF R VOLUNTEERED AT M15a-b OR M21a-b OR M25a-b]

M29a. Not counting the volunteering you just told me about (during 2002), how often did you volunteer through organizations that help **people in poor health**, such as helping at a hospital, hospice or clinic, or raising funds to fight disease?

[ELSE]

M29a. During 2002, how often did you volunteer through organizations that help **people in poor health**, such as helping at a hospital, hospice or clinic, or raising funds to fight disease?

_____ *M29a* TIMES PER _____ *M29b* (TPERDAY)

IF *M29a* = (ZERO, DK, RF), NEXT PAGE M30 CKPT; ELSE CONTINUE.

M29c. How much time would you **typically** spend during **one** of those volunteering sessions?

_____ *M29c* Hours _____ *M29d* Minutes

IF *M29b*=Other (Specify:) OR *M29c-d* = (DK, RF), CANNOT CALCULATE *M29TotHrs*.
SKIP TO M29f. ELSE CONTINUE

CAI calculation of annualized volunteer hours for use in *M29e*:

$$M29TotHrs = NTimes \times NHours = M29a * (M29b/Year) * (M29c+(M29d/60))$$

M29e. Over **all of 2002**, that would have been (about) _____ *M29TotHrs* hours of volunteering at or through organizations that help **people in poor health**. Does that sound **about right**, or did you volunteer **more** hours or **fewer** hours?

- | | | | |
|----------------|------------------------|-------|------------------|
| 1. FEWER. | CONTINUE TO M29f | 8. DK | CONTINUE TO M29f |
| 2. ABOUT RIGHT | NEXT PAGE, M29g | 9. RF | CONTINUE TO M29f |
| 3. MORE. | CONTINUE TO M29f | | |

M29f. Then (during 2002) how many hours **altogether** would you say you volunteered at or through organizations that help **people in poor health**?

IF DK or RF: What is your best estimate?

_____ HRS

[Time Measurement]

[IF M29f IS NOT NR, THEN CONTINUE TO M29g. ELSE, SKIP TO NEXT PAGE, M30 CKPT]

IF NTIMES > 6 ASK THE FOLLOWING; ELSE SKIP TO M30 CKPT

M29g. Are you including the **occasional** times when you might have done a lot of volunteer activity on a **single day**?

TYESNO

IF M29g =NO, CONTINUE WITH M29h; ELSE (M29g =YES, DK, RF), SKIP TO M30 CKPT

M29h. If you add this occasional volunteering time to your regular volunteering, [M29TotHrs] hours, how many hours **altogether** would you say you volunteered at or through organizations that help **people in poor health**?

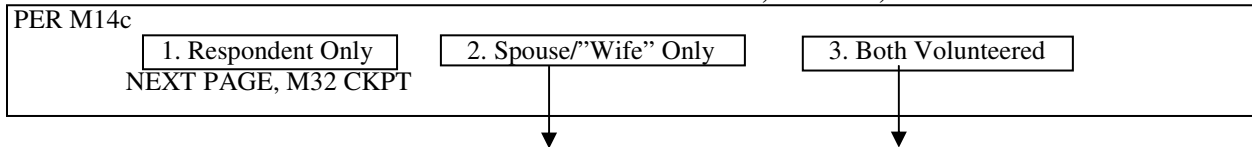
PROBE /RR/ answer if less than or equal to regular volunteering hours: [M29TotHrs]

IF DK, RF: What is your best estimate?

_____ HRS

[Time Measurement]

M30. CHECKPOINT – WHO VOLUNTEERED LAST YEAR: R, SPOUSE, OR BOTH



[SPOUSE VOLUNTEERING TO HELP PEOPLE IN POOR HEALTH]

[IF SPOUSE VOLUNTEERED AT M18a-b OR M23a-b OR M27a-b]

M31a. Not counting the volunteering you just told me about (during 2002), how often did [SPOUSE NAME] volunteer through organizations that help **people in poor health**, such as helping at a hospital, hospice or clinic, or raising funds to fight disease?

[ELSE]

M31a. During 2002, how often did [SPOUSE NAME] volunteer through organizations that help **people in poor health**, such as helping at a hospital, hospice or clinic, or raising funds to fight disease?

_____ M31a TIMES PER _____ M31b (TPERDAY)

IF M31a = (ZERO, DK, RF), NEXT PAGE M32 CKPT; ELSE CONTINUE TO M31c.

M31c. How much time would [she/he] **typically** spend during **one** of those volunteering sessions?

_____ M31c Hours _____ M31d Minutes

IF M31b=Other (Specify:) OR M31c-d = (DK, RF), CANNOT CALCULATE M31TotHrs.
SKIP TO NEXT PAGE, M31f. ELSE CONTINUE

CAI calculation of annualized volunteer hours for use in M31e:

$$M31TotHrs = NTimes \times NHours = M31a * (M31b/Year) * (M31c+(M31d/60))$$

M31e. Over **all of 2002**, that would have been (about) M31TotHrs hours of volunteering at or through organizations that help **people in poor health**. Does that sound **about right**, or did [SPOUSE NAME] volunteer **more** hours or **fewer** hours?

- | | | | |
|----------------|---------------------|-------|------------------|
| 1. FEWER. | CONTINUE TO M31f | 8. DK | CONTINUE TO M31f |
| 2. ABOUT RIGHT | SKIP TO M31g | 9. RF | CONTINUE TO M31f |
| 3. MORE. | CONTINUE TO M31f | | |

M31f. Then (during 2002) how many hours **altogether** would you say [she/he] volunteered at or through organizations that help **people in poor health**?

IF DK or RF: What is your best estimate?

_____ HRS

[Time Measurement]

[IF M31f IS NOT NR, THEN CONTINUE TO M31g. ELSE, SKIP TO M32 CKPT]

IF NTIMES > 6 ASK THE FOLLOWING; ELSE SKIP TO M32 CKPT

M31g. Are you including the **occasional** times when [she/he] might have done a lot of volunteer activity on a **single day**?

TYESNO

IF M31g =NO, CONTINUE WITH M31h; ELSE (M31g =YES, DK, RF), SKIP TO M32 CKPT

M31h. If you add this occasional volunteering time to [her/his] regular volunteering, [M31TotHrs] hours, how many hours **altogether** would you say [she/he] volunteered at or through organizations that help **people in poor health**?

PROBE /RR/ answer if less than or equal to regular volunteering hours: [M31TotHrs]

IF DK, RF: What is your best estimate?

_____ HRS

[Time Measurement]

M32. CHECKPOINT – WHO VOLUNTEERED LAST YEAR: R, SPOUSE, OR BOTH

PER M14c		
1. Respondent Only	2. Spouse/"Wife" Only	3. Both Volunteered
NEXT PAGE, M33a	GO TO M34 CKPT	NEXT PAGE, M33a

[R'S VOLUNTEERING TO HELP PEOPLE IN NEED]

[IF R VOLUNTEERED AT M15a-b OR M21a-b OR M25a-b OR M29a-b]

M33a. (Not counting the volunteering you just told me about (during 2002), how often did you volunteer through organizations to **help people in need**, such as working at a soup kitchen, building or repairing a house, or providing other **basic necessities**?)

[ELSE]

M33a. During 2002, how often did you volunteer through organizations to **help people in need**, such as working at a soup kitchen, building or repairing a house, or providing other **basic necessities**?

_____ *M33a* TIMES PER _____ *M33b* (TPERDAY)

IF M33a = (ZERO, DK, RF), NEXT PAGE M34 CKPT; ELSE CONTINUE.

M33c. How much time would you **typically** spend during **one** of those volunteering sessions?

_____ *M33c* Hours _____ *M33d* Minutes

IF M33b=Other (Specify:) OR M33c-d = (DK, RF), CANNOT CALCULATE M33TotHrs.

SKIP TO M33f. ELSE CONTINUE

CAI calculation of annualized volunteer hours for use in M33e:

$$M33TotHrs = NTimes \times NHours = M33a * (M33b/Year) * (M33c+(M33d/60))$$

M33e. Over **all of 2002**, that would have been (about) _____ *M33TotHrs* hours of volunteering at or through organizations to **help people in need**. Does that sound **about right**, or did you volunteer **more** hours or **fewer** hours?

- | | | | |
|----------------|------------------------|-------|------------------|
| 1. FEWER. | CONTINUE TO M33f | 8. DK | CONTINUE TO M33f |
| 2. ABOUT RIGHT | NEXT PAGE, M33g | 9. RF | CONTINUE TO M33f |
| 3. MORE. | CONTINUE TO M33f | | |

M33f. Then (during 2002) how many hours **altogether** would you say you volunteered at or through organizations to **help people in need**?

IF DK or RF: What is your best estimate?

_____ HRS

[Time Measurement]

[IF M33f IS NOT NR, THEN CONTINUE TO M33g. ELSE, SKIP TO NEXT PAGE, M34 CKPT]

IF NTIMES > 6 ASK THE FOLLOWING; ELSE SKIP TO M34 CKPT

M33g. Are you including the **occasional** times when you might have done a lot of volunteer activity on a **single day**?

TYESNO

IF M33g =NO, CONTINUE WITH M33h; ELSE (M33g =YES, DK, RF), SKIP TO M34 CKPT

M33h. If you add this occasional volunteering time to your regular volunteering, [M33TotHrs] hours, how many hours **altogether** would you say you volunteered at or through organizations to **help people in need**?

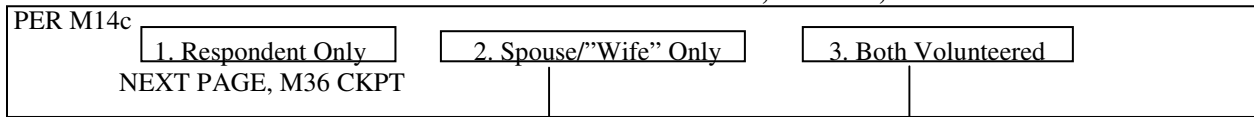
PROBE /RR/ answer if less than or equal to regular volunteering hours: [M33TotHrs]

IF DK, RF: What is your best estimate?

_____ HRS

[Time Measurement]

M34. CHECKPOINT – WHO VOLUNTEERED LAST YEAR: R, SPOUSE, OR BOTH



[SPOUSE VOLUNTEERING TO HELP PEOPLE IN NEED]

[IF SPOUSE VOLUNTEERED AT M18a-b OR M23a-b OR M27a-b OR M31a-b]

M35a. (Not counting the volunteering you just told me about during 2002), how often did [SPOUSE NAME] volunteer through organizations that **help people in need**, such as working at a soup kitchen, building or repairing a house, or providing other **basic necessities**?

[ELSE]

M35a. During 2002, how often did [SPOUSE NAME] volunteer through organizations that **help people in need**, such as working at a soup kitchen, building or repairing a house, or providing other **basic necessities**?

_____ M35a _____ TIMES PER _____ M35b _____ (TPERDAY)

IF M35a = (ZERO, DK, RF), NEXT PAGE M36 CKPT; ELSE CONTINUE TO M35c.

M35c. How much time would [she/he] **typically** spend during **one** of those volunteering sessions?

_____ M35c _____ Hours _____ M35d _____ Minutes

IF M35b=Other (Specify:) OR M35c-d = (DK, RF), CANNOT CALCULATE M35TotHrs.
NEXT PAGE, M35f. ELSE CONTINUE

CAI calculation of annualized volunteer hours for use in M35e:

$$M35TotHrs = NTimes \times NHours = M35a * (M35b/Year) * (M35c+(M35d/60))$$

M35e. Over **all of 2002**, that would have been (about) M35TotHrs hours of volunteering at or through organizations that **help people in need**. Does that sound **about right**, or did [she/he] volunteer **more** hours or **fewer** hours?

- | | | | |
|----------------|------------------|-------|------------------|
| 1. FEWER. | CONTINUE TO M35f | 8. DK | CONTINUE TO M35f |
| 2. ABOUT RIGHT | SKIP TO M35g | 9. RF | CONTINUE TO M35f |
| 3. MORE. | CONTINUE TO M35f | | |

M35f. Then (during 2002) how many hours **altogether** would you say [she/he] volunteered at or through organizations that **help people in need**?

IF DK or RF: What is your best estimate?

_____ HRS

[Time Measurement]

[IF M35f IS NOT NR, THEN CONTINUE TO M35g. ELSE, SKIP TO M36 CKPT]

IF NTIMES > 6 ASK THE FOLLOWING; ELSE SKIP TO M36 CKPT

M35g. Are you including the **occasional** times when [she/he] might have done a lot of volunteer activity on a **single day**?

TYESNO

IF M35g =NO, CONTINUE WITH M35h; ELSE (M35g =YES, DK, RF), SKIP TO M36 CKPT

M35h. If you add this occasional volunteering time to [her/his] regular volunteering, [M35TotHrs] hours, how many hours **altogether** would you say [she/he] volunteered at or through organizations that **help people in need**?

PROBE /RR/ answer if less than or equal to regular volunteering hours: [M35TotHrs]

IF DK, RF: What is your best estimate?

_____ HRS

[Time Measurement]

M36. CHECKPOINT – WHO VOLUNTEERED LAST YEAR: R, SPOUSE, OR BOTH

PER M14c		
<div style="border: 1px solid black; padding: 5px; width: fit-content; margin: 0 auto;">1. Respondent Only</div> <p>NEXT PAGE, M37a</p>	<div style="border: 1px solid black; padding: 5px; width: fit-content; margin: 0 auto;">2. Spouse/"Wife" Only</div> <p>GO TO M38 CKPT</p>	<div style="border: 1px solid black; padding: 5px; width: fit-content; margin: 0 auto;">3. Both Volunteered</div> <p>NEXT PAGE, M37a</p>

[R'S VOLUNTEERING TO BRING ABOUT SOCIAL CHANGE]

[IF R VOLUNTEERED AT M15a-b OR M21a-b OR M25a-b OR M29a-b OR M33a-b]

M37a. (Not counting the volunteering you just told me about during 2002), how often did you volunteer through organizations to bring about **social change**, such as civic or community action, working for a political party or advocacy group?

[ELSE]

M37a. During 2002, how often did you volunteer through organizations to bring about **social change**, such as civic or community action, working for a political party or advocacy group?

M37a TIMES PER M37b (TPERDAY)

IF M37a = (ZERO, DK, RF), NEXT PAGE M38 CKPT; ELSE CONTINUE

M37c. How much time would you **typically** spend during **one** of those volunteering sessions?

M37c Hours M37d Minutes

IF M37b=Other (Specify:) OR M37c-d = (DK, RF), CANNOT CALCULATE M37TotHrs.

SKIP TO M37f. ELSE CONTINUE

CAI calculation of annualized volunteer hours for use in M37e:

$$M37TotHrs = NTimes \times NHours = M37a * (M37b/Year) * (M37c+(M37d/60))$$

M37e. Over **all of 2002**, that would have been (about) M37TotHrs hours of volunteering at or through organizations to bring about **social change**. Does that sound **about right**, or did you volunteer **more** hours or **fewer** hours?

- | | | | |
|----------------|------------------|-------|------------------|
| 1. FEWER. | CONTINUE TO M37f | 8. DK | CONTINUE TO M37f |
| 2. ABOUT RIGHT | NEXT PAGE, M37g | 9. RF | CONTINUE TO M37f |
| 3. MORE. | CONTINUE TO M37f | | |

M37f. Then (during 2002) how many hours **altogether** would you say you volunteered at or through organizations to bring about **social change**?

IF DK or RF: What is your best estimate?

 HRS

[Time Measurement]

[IF M37f IS NOT NR, THEN CONTINUE TO M37g. ELSE, SKIP TO NEXT PAGE, M38 CKPT]

IF NTIMES > 6 ASK THE FOLLOWING; ELSE SKIP TO M38 CKPT

M37g. Are you including the **occasional** times when you might have done a lot of volunteer activity on a **single day**?

TYESNO

IF M37g =NO, CONTINUE WITH M37h; ELSE (M37g =YES, DK, RF), SKIP TO M38 CKPT

M37h. If you add this occasional volunteering time to your regular volunteering, [M37TotHrs] hours, how many hours **altogether** would you say you volunteered at or through organizations to bring about **social change**?

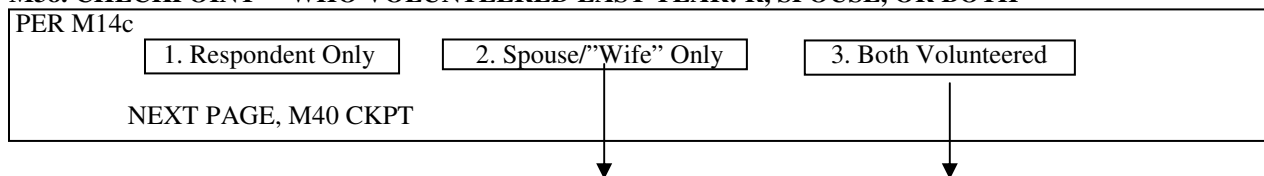
PROBE /RR/ answer if less than or equal to regular volunteering hours: [M37TotHrs]

IF DK, RF: What is your best estimate?

_____ HRS

[Time Measurement]

M38. CHECKPOINT – WHO VOLUNTEERED LAST YEAR: R, SPOUSE, OR BOTH



[SPOUSE VOLUNTEERING TO BRING ABOUT SOCIAL CHANGE]

[IF SPOUSE VOLUNTEERED AT M18a-b OR M23a-b OR M27a-b OR M31a-b OR M35a-b]

M39a. (Not counting the volunteering you just told me about during 2002), how often did [SPOUSE NAME] volunteer through organizations to bring about **social change**, such as civic or community action, working for a political party or advocacy group?

[ELSE]

M39a. During 2002, how often did [SPOUSE NAME] volunteer through organizations to bring about **social change**, such as civic or community action, working for a political party or advocacy group?

M39a TIMES PER M39b (TPERDAY)

IF M39a = (ZERO, DK, RF), NEXT PAGE M40 CKPT; ELSE CONTINUE.

M39c. How much time would [she/he] **typically** spend during **one** of those volunteering sessions?

M39c Hours M39d Minutes

IF M39b=Other (Specify:) OR M39c-d = (DK, RF), CANNOT CALCULATE M39TotHrs.

NEXT PAGE, M39f. ELSE CONTINUE

CAI calculation of annualized volunteer hours for use in M39e:

$$M39TotHrs = NTimes \times NHours = M39a * (M39b/Year) * (M39c+(M39d/60))$$

M39e. Over **all of 2002**, that would have been (about) M39TotHrs hours of volunteering at or through organizations to bring about **social change**. Does that sound **about right**, or did [she/he] volunteer **more** hours or **fewer** hours?

- | | | | |
|----------------|---------------------|-------|------------------|
| 1. FEWER. | CONTINUE TO M39f | 8. DK | CONTINUE TO M39f |
| 2. ABOUT RIGHT | SKIP TO M39g | 9. RF | CONTINUE TO M39f |
| 3. MORE. | CONTINUE TO M39f | | |

M39f. Then (during 2002) how many hours **altogether** would you say [she/he] volunteered at or through organizations to bring about **social change**?

IF DK or RF: What is your best estimate?

_____ HRS

[Time Measurement]

[IF M39f IS NOT NR, THEN CONTINUE TO M39g. ELSE, SKIP TO NEXT PAGE, M40 CKPT]

IF NTIMES > 6 ASK THE FOLLOWING; ELSE SKIP TO M40 CKPT

M39g. Are you including the **occasional** times when [she/he] might have done a lot of volunteer activity on a **single day**?

TYESNO

IF M39g =NO, CONTINUE WITH M39h; ELSE (M39g =YES, DK, RF), SKIP TO M40 CKPT

M39h. If you add this occasional volunteering time to [her/his] regular volunteering, [M39TotHrs] hours, how many hours **altogether** would you say [she/he] volunteered at or through organizations to bring about **social change**?

PROBE /RR/ answer if less than or equal to regular volunteering hours: [M39TotHrs]

IF DK, RF: What is your best estimate?

_____ HRS

[Time Measurement]

M40. CHECKPOINT – WHO VOLUNTEERED LAST YEAR: R, SPOUSE, OR BOTH

PER M14c		
1. Respondent Only	2. Spouse/"Wife" Only	3. Both Volunteered
NEXT PAGE, M41a	GO TO M42 CKPT	NEXT PAGE, M41a

[R'S OTHER VOLUNTEERING]

[IF R VOLUNTEERED AT M15a-b OR M21a-b OR M25a-b OR M29a-b OR M33a-b OR M37a-b]

M41Intro. Did you do any **other** volunteering (through organizations) for purposes or activities that we have **not already mentioned**?

IF NECESSARY: This might be working a hotline, helping animals or the environment, supporting arts and cultural activity, or working in the community and neighborhood. Or **any other activities** such as serving on a board or a committee, doing office work, fund raising, organizing events, or consulting?

[ELSE]

M41Intro. (During 2002), did you do any volunteering (through organizations) for purposes or activities that we have **not already mentioned**?

IF NECESSARY: This might be working a hotline, helping animals or the environment, supporting arts and cultural activity, or working in the community and neighborhood. Or **any other activities** such as serving on a board or a committee, doing office work, fund raising, organizing events, or consulting?

TYESNO —————> NEXT PAGE, M42 CHECKPOINT



M41Open. What were those volunteering activities? Can you tell me a little more about what you did?
(open)

M41a. (During 2002), how often did you volunteer for (this/these) **other purpose(s)**?

M41a TIMES PER M41b (TPERDAY)

IF M41a = (ZERO, DK, RF), NEXT PAGE M42 CKPT; ELSE CONTINUE.

M41c. How much time would you **typically** spend during **one** of those volunteering sessions?

M41c Hours M41d Minutes

IF M41b=Other (Specify:) OR M41c-d = (DK, RF), CANNOT CALCULATE M41TotHrs.

SKIP TO NEXT PAGE, M41f. ELSE CONTINUE

CAI calculation of annualized volunteer hours for use in M41e:

$$M41TotHrs = NTimes \times NHours = M41a * (M41b/Year) * (M41c+(M41d/60))$$

M41e. Over **all of 2002**, that would have been (about) M41TotHrs hours of volunteering for (this/these) other purpose(s)? Does that sound **about right**, or did you volunteer **more** hours or **fewer** hours?

- | | | | |
|----------------|------------------------|-------|-----------------|
| 1. FEWER. | NEXT PAGE, M41f | 8. DK | NEXT PAGE, M41f |
| 2. ABOUT RIGHT | NEXT PAGE, M41g | 9. RF | NEXT PAGE, M41f |
| 3. MORE. | CONTINUE TO M41f | | |

M41f. Then (during 2002) how many hours **altogether** would you say you volunteered for (this/these) other purpose(s)?

IF DK or RF: What is your best estimate?

_____ HRS

[Time Measurement]

[IF M41f IS NOT NR, THEN CONTINUE TO M41g. ELSE, SKIP TO M42 CKPT]

IF NTIMES > 6 ASK THE FOLLOWING; ELSE SKIP TO M42 CKPT

M41g. Are you including the **occasional** times when you might have done a lot of volunteer activity on a **single day**?

TYESNO

IF M41g =NO, CONTINUE WITH M41h; ELSE (M41g =YES, DK, RF), SKIP TO M42 CKPT

M41h. If you add this occasional volunteering time to your regular volunteering, [M41TotHrs] hours, how many hours **altogether** would you say you volunteered for just (this/these) other purpose(s)?

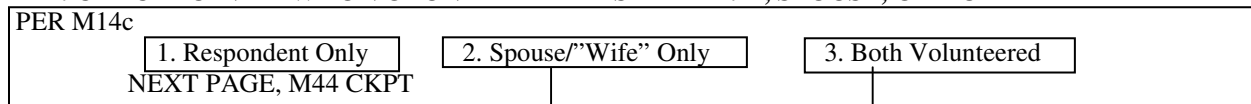
PROBE /RR/ answer if less than or equal to regular volunteering hours: [M41TotHrs]

IF DK, RF: What is your best estimate?

_____ HRS

[Time Measurement]

M42. CHECKPOINT – WHO VOLUNTEERED LAST YEAR: R, SPOUSE, OR BOTH



[SPOUSE'S OTHER VOLUNTEERING]

[IF SPOUSE VOLUNTEERED AT M18a-b OR M23a-b OR M27a-b OR M31a-b OR M35a-b OR M39a-b]

M43Intro. Did [SPOUSE NAME] do any **other** volunteering (through organizations) for purposes or activities that we have **not already mentioned**?

IF NECESSARY: This might be working a hotline, helping animals or the environment, supporting arts and cultural activity, or working in the community and neighborhood. Or **any other activities** such as serving on a board or a committee, doing office work, fund raising, organizing events, or consulting?

[ELSE]

M43Intro. (During 2002), did [SPOUSE NAME] do any volunteering (through organizations) for purposes or activities that we have **not already mentioned**?

IF NECESSARY: This might be working a hotline, helping animals or the environment, supporting arts and cultural activity, or working in the community and neighborhood. Or **any other activities** such as serving on a board or a committee, doing office work, fund raising, organizing events, or consulting?

TYESNO → GO TO M44 CHECKPOINT



M43Open. What were those volunteering activities? Can you tell me a little more about what [she/he] did?
(open)

M43a. (During 2002), how often did [she/he] volunteer for (this/these) **other purpose(s)**?

M43a TIMES PER M43b (TPERDAY)

IF M43a = (ZERO, DK, RF), NEXT PAGE M44 CKPT; ELSE CONTINUE.

M43c. How much time would [she/he] **typically** spend during **one** of those volunteering sessions?

M43c Hours M43d Minutes

IF M43b=Other (Specify:) OR M43c-d = (DK, RF), CANNOT CALCULATE M43TotHrs.

SKIP TO M43f. ELSE CONTINUE

CAI calculation of annualized volunteer hours for use in M43e:

$$M43TotHrs = NTimes \times NHours = M43a * (M43b/Year) * (M43c+(M43d/60))$$

M43e. Over **all of 2002**, that would have been (about) M43TotHrs hours of volunteering for (this/these) other purpose(s)? Does that sound **about right**, or did [she/he] volunteer **more** hours or **fewer** hours?

- | | | | |
|----------------|------------------|-------|------------------|
| 1. FEWER. | CONTINUE TO M43f | 8. DK | CONTINUE TO M43f |
| 2. ABOUT RIGHT | SKIP TO M43g | 9. RF | CONTINUE TO M43f |
| 3. MORE. | CONTINUE TO M43f | | |

M43f. Then (during 2002) how many hours **altogether** would you say [she/he] volunteered for (this/these) other purpose(s)?

IF DK or RF: What is your best estimate? _____ HRS

[Time Measurement]

[IF M43f IS NOT NR, THEN CONTINUE TO M43g. ELSE, SKIP TO NEXT PAGE, M44 CKPT]

IF NTIMES > 6 ASK THE FOLLOWING; ELSE SKIP TO M44 CKPT

M43g. Are you including the **occasional** times when [she/he] might have done a lot of volunteer activity on a **single day**?

TYESNO

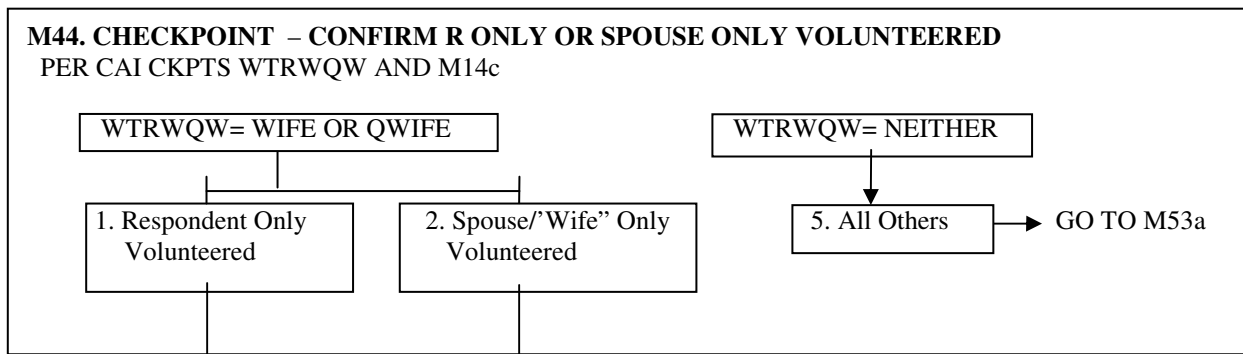
IF M43g =NO, CONTINUE WITH M43h; ELSE (M43g =YES, DK, RF), SKIP TO NEXT PAGE, M44 CKPT

M43h. If you add this occasional volunteering time to [her/his] regular volunteering, [M43TotHrs,] hours, how many hours **altogether** would you say [she/he] volunteered for (this/these) other purpose(s)?

PROBE /RR/ answer if less than or equal to regular volunteering hours: [M41TotHrs]

IF DK, RF: What is your best estimate? _____ HRS

[Time Measurement]



M45. Now that you have had a chance to hear about the kinds of volunteer activity we are interested in, let me ask again about [your/*SPOUSE's*] volunteering. During 2002, did [you/she/he] do any of this kind of volunteering through organizations?

TYESNO → GO TO M53a

M46. Was any of [your/his/her] volunteering at or through [your/his/her] place of worship?

TYESNO → GO TO M47

M46a. (During 2002,) how many hours **altogether** would you say [you/she/he] volunteered at or through [your/his/her] place of worship?

IF DK, RF: What is your best estimate?

_____ HRS

M47. Was any of [your/his/her] volunteering through organizations that help **children and youth**?

TYESNO → NEXT PAGE, M48

M47a. (During 2002,) how many hours **altogether** would you say [you/she/he] volunteered through organizations that help **children and youth**?

IF DK, RF: What is your best estimate?

_____ HRS

M48. Was any of [your/his/her] volunteering through organizations that help senior citizens?

TYESNO → GO TO M49



M48a. (During 2002,) how many hours **altogether** would you say [you/she/he] volunteered through organizations for senior citizens?

IF DK, RF: What is your best estimate?

_____ HRS

M49. Was any of [your/his/her] volunteering through organizations that help **people in poor health**?

TYESNO → GO TO M50



M49a. (During 2002,) how many hours **altogether** would you say [you/she/he] volunteered through organizations that help **people in poor health**?

IF DK, RF: What is your best estimate?

_____ HRS

M50. Was any of [your/his/her] volunteering through organizations that **help people in need of basic necessities**?

TYESNO → GO TO M51



M50a. (During 2002,) how many hours **altogether** would you say [you/she/he] volunteered through organizations that **help people in need of basic necessities**?

IF DK, RF: What is your best estimate?

_____ HRS

M51. Was any of [your/his/her] volunteering through organizations to bring about **social change**?

TYESNO → NEXT PAGE, M52



M51a. (During 2002,) how many hours **altogether** would you say [you/she/he] volunteered through organizations to bring about **social change**?

IF DK, RF: What is your best estimate?

_____ HRS

M52. Did [you/she/he] do any volunteering (through organizations) for purposes or activities that we have **not already mentioned**?

TYESNO → GO TO M53a
↓

M52Open. What were those volunteering activities? Can you tell me a little bit more about what [you/she/he] did?

(open)

M52a. (During 2002,) how many hours **altogether** would you say [you/she/he] volunteered for these **other purposes or activities**?

IF DK, RF: What is your best estimate?

_____ HRS

[Time Measurement]

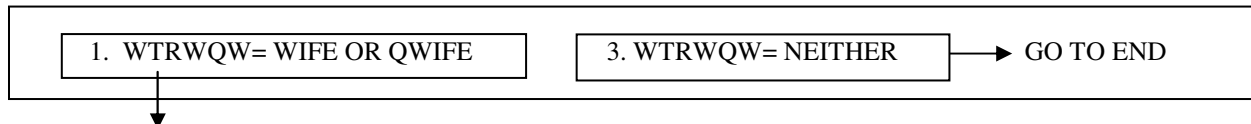
[R'S AND SPOUSE'S RELIGIOUS ATTENDANCE, ALL RS ARE ASKED]

M53a. **During the year 2002**, on average, how often did you go to religious services?

_____ *M53a* TIMES PER _____ *M53b* (TPERDAY)

[Time Measurement]

CAI CHECKPOINT – WIFE/"WIFE" IN FU



[SPOUSE'S RELIGIOUS ATTENDANCE]

M54a. **During the year 2002**, on average, how often did [SPOUSE'S NAME] go to religious services?

_____ *M54a* TIMES PER _____ *M54b* (TPERDAY)

END OF SECTION M

[Time Measurement]