

Panel Study of Income Dynamics, 2007
Generosity Questions, pages 140-145, which follow this page
From <http://simba.isr.umich.edu/Zips/ZipMain.aspx>

2007

THE PANEL STUDY OF INCOME DYNAMICS

For Office Use Only

For Office Use Only	SURVEY RESEARCH CENTER INSTITUTE FOR SOCIAL RESEARCH THE UNIVERSITY OF MICHIGAN ANN ARBOR, MICHIGAN
---------------------	---

<table border="1"> <tr><td> </td><td> </td><td> </td><td> </td></tr> </table> <p>68 ID</p> <table border="1"> <tr><td> </td><td> </td><td> </td><td> </td><td> </td><td> </td></tr> </table> <p>07 ID</p> <p>For Office Use Only</p>											<p>1. INTERVIEWER'S LABEL</p> <p><u>OR</u></p> <p>TF INTERVIEWER ID: _____</p>

2. Your Iw. No. _____

3. Iw. Date _____

4. Iw. Length _____ MINUTES

5. Post-edit Length _____ MINUTES

REVIEWED:

BY SUPERVISOR _____ (DATE)

BY FIELD OFFICE _____ (DATE)

For Office Use Only

6. SAMPLE ID#

--	--	--	--

--	--	--

IF SPLITOFF: PERSON NUMBER

--	--	--

7. Who was your Respondent?

1. HEAD	2. WIFE	3. "WIFE"	7. OTHER (SPECIFY)
---------	---------	-----------	--------------------

8. Total number of calls required to obtain interview (see item 19 of Coversheet):

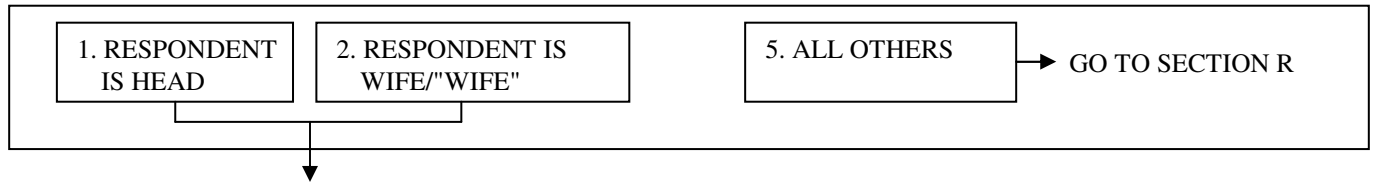
--

9. Language of interview was **ENTER all that apply:**

1. ENGLISH	2. SPANISH	7. OTHER (SPECIFY)
------------	------------	--------------------

SECTION M PHILANTHROPY MODULE

CHECKPOINT – RESPONDENT IS HEAD/WIFE/"WIFE"

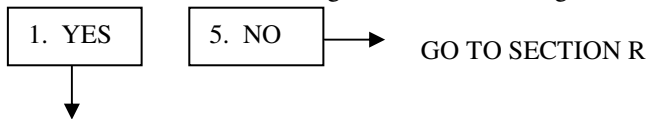


M1_INTRO. In this next to the last section, we will be talking about money donations to charitable organizations.

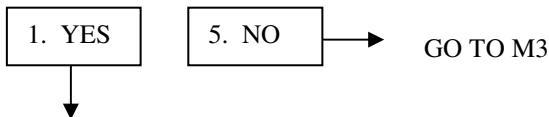
Charitable organizations include religious or non-profit organizations that help those in need or that serve and support the public interests. They range in size from national organizations like the United Way and the American Red Cross down to local community organizations. They serve a variety of purposes such as religious activity, helping people in need, health care and medical research, education, arts, environment, and international aid. Our definition of charity **does not include** political contributions.

Donations include any gifts of money, assets, or property made directly to the organization, through payroll deduction, or collected by other means on behalf of the charity. This interview is limited to donations made during the calendar year 2006.

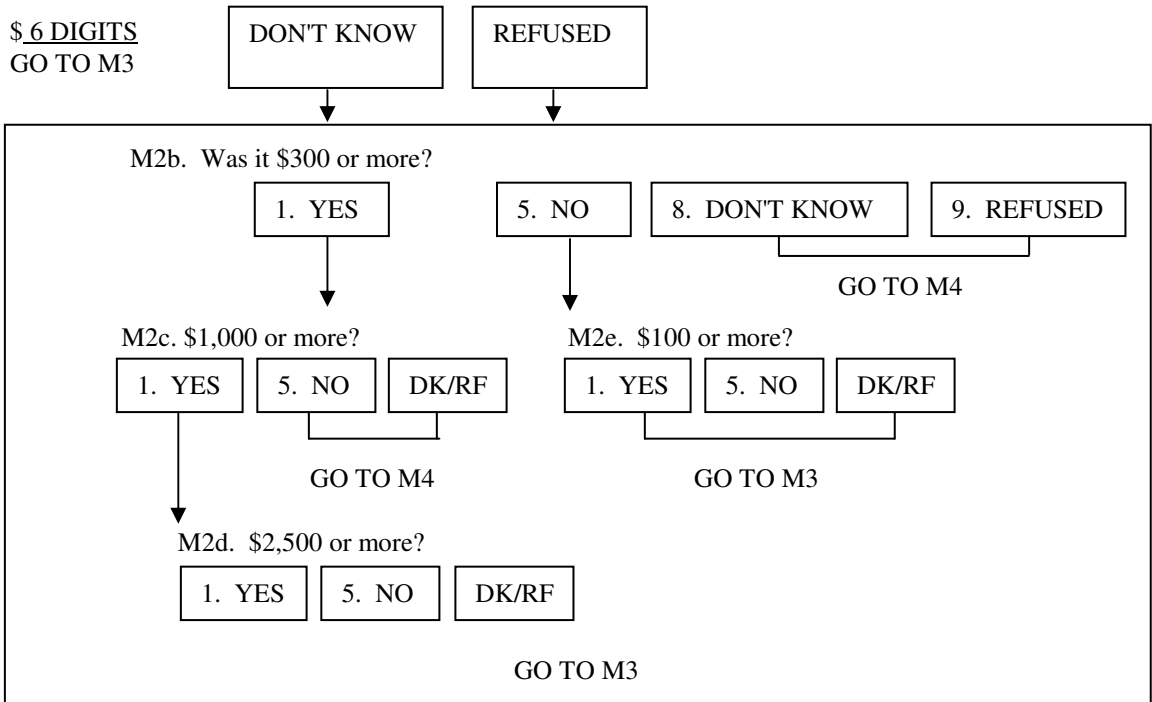
M1. **During the year 2006**, did you [or anyone in your family] **donate** money, assets, or property/goods, with a combined value of **more than \$25** to religious or charitable organizations?



M2. Did you make any donations specifically for **religious purposes or spiritual development**, for example to a church, synagogue, mosque, TV or radio ministry? Please do not include donations to schools, hospitals, and other charities run by religious organizations. I will be asking you about those donations next.



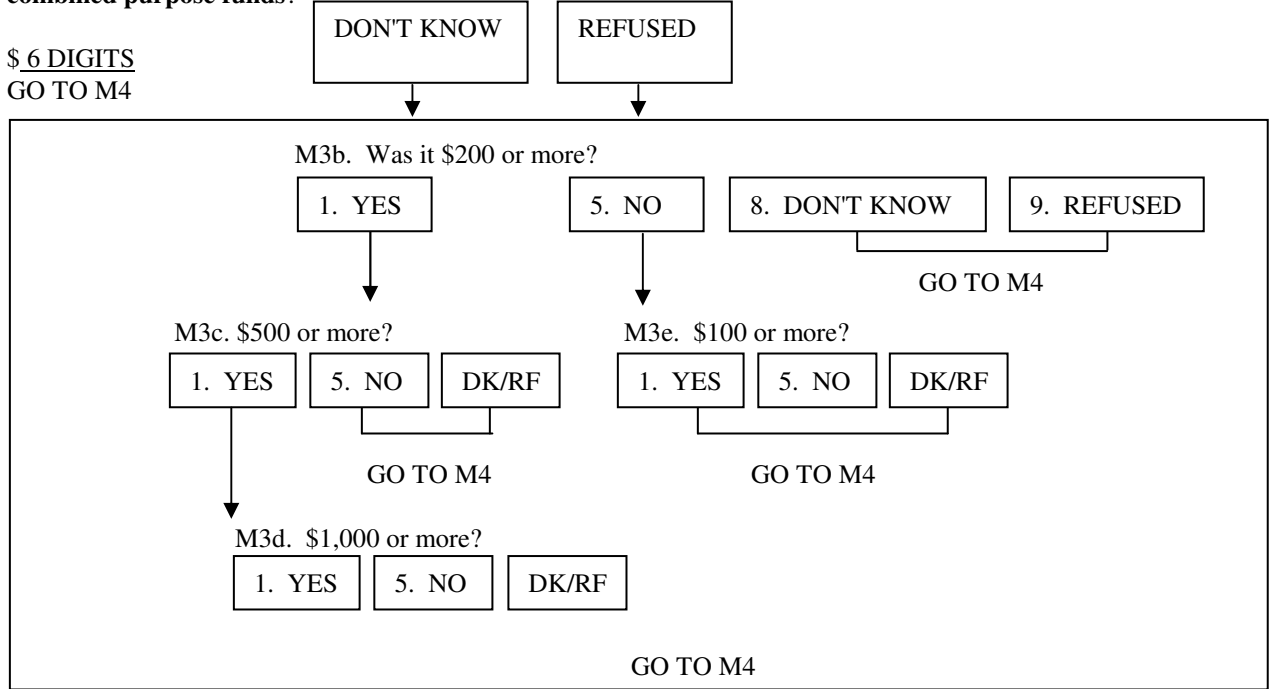
M2a. Altogether, what was the total dollar value of all donations you [and your family] made **in 2006** towards **religious purposes**?



M3. [M2=1: Not counting the donations you just told me about, during 2006 / ELSE: During 2006] did you [or anyone in your family] donate to any organization that served a **combination of purposes**? For example, the United Way, the United Jewish Appeal, the Catholic Charities, or your local community foundation?

1. YES 5. NO → GO TO M4

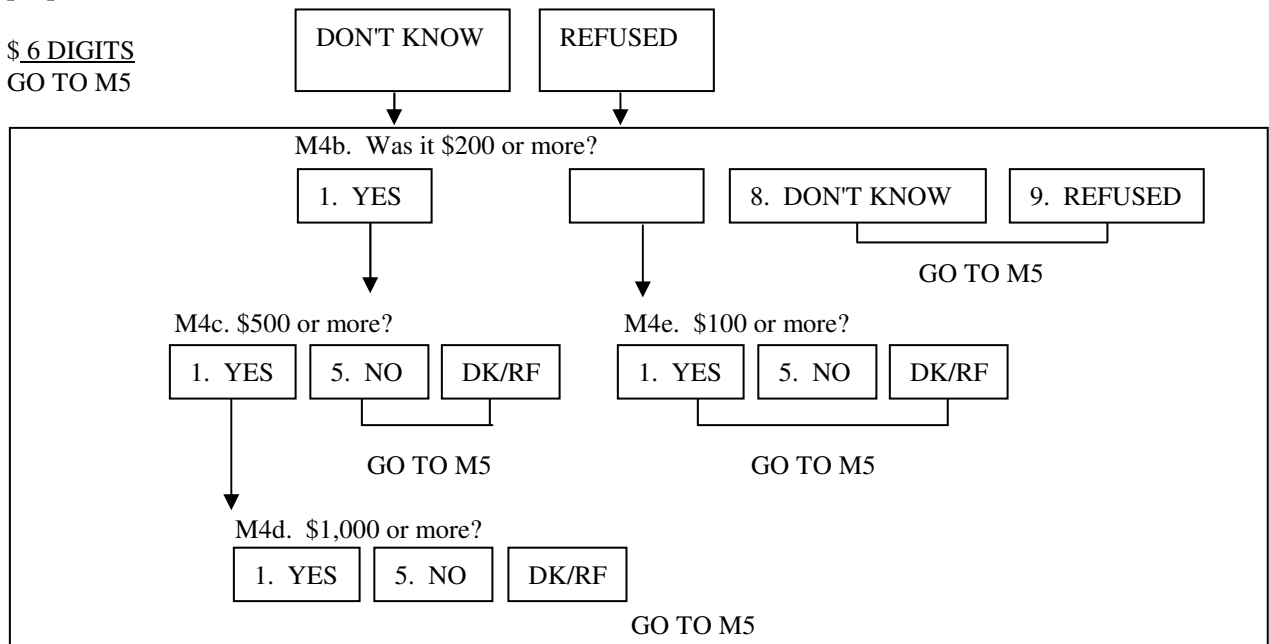
M3a. [Altogether,] what was the total dollar value of all donations you [and your family] made **in 2006** towards **combined purpose funds**?



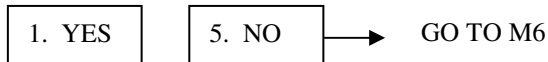
M4. [M2=1 OR M3=1: Not counting the donations you just told me about, did you/ ELSE: Did you] [or anyone in your family] make any donations (during 2006) to organizations that **help people in need of food, shelter, or other basic necessities**?

1. YES 5. NO → GO TO M5

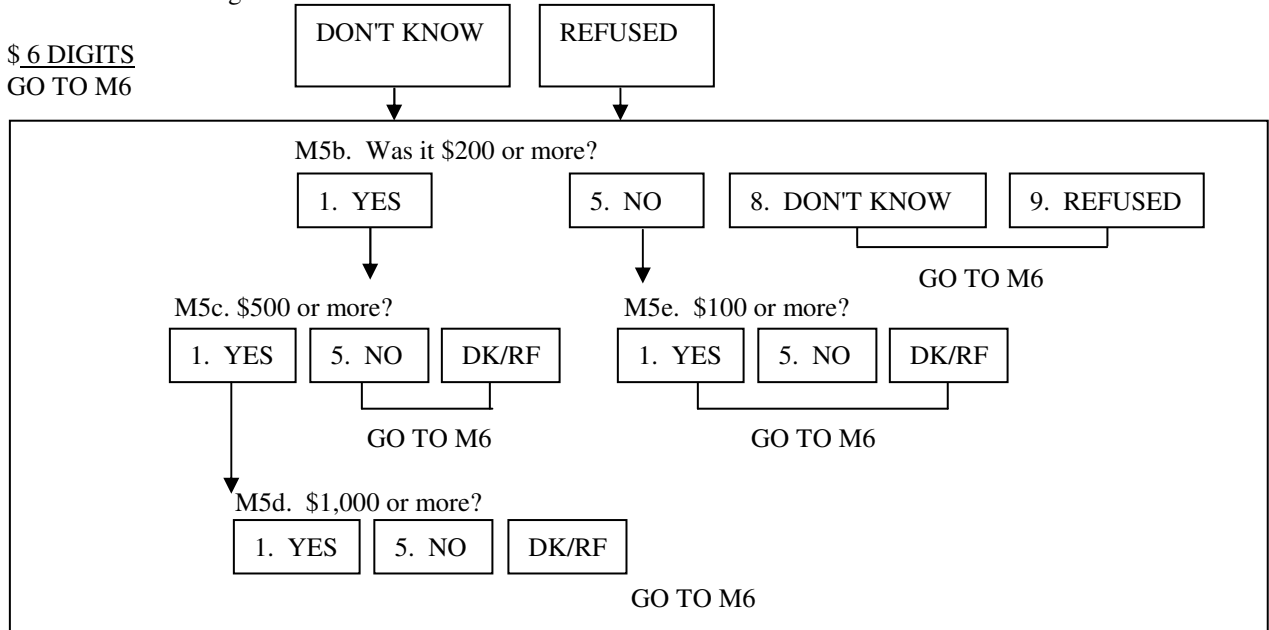
M4a. What was the total dollar value of all donations you [and your family] made **in 2006** to organizations that **help people in need of basic necessities**?



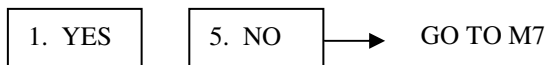
M5. [M2=1 OR M3=1 OR M4=1: (Not counting the donations you just told me about,) did you/ ELSE: Did you] [or anyone in your family] make donations (during 2006) to **health care or medical research** organizations? For example, to hospitals, nursing homes, mental health facilities, cancer, heart and lung associations, or telethons?



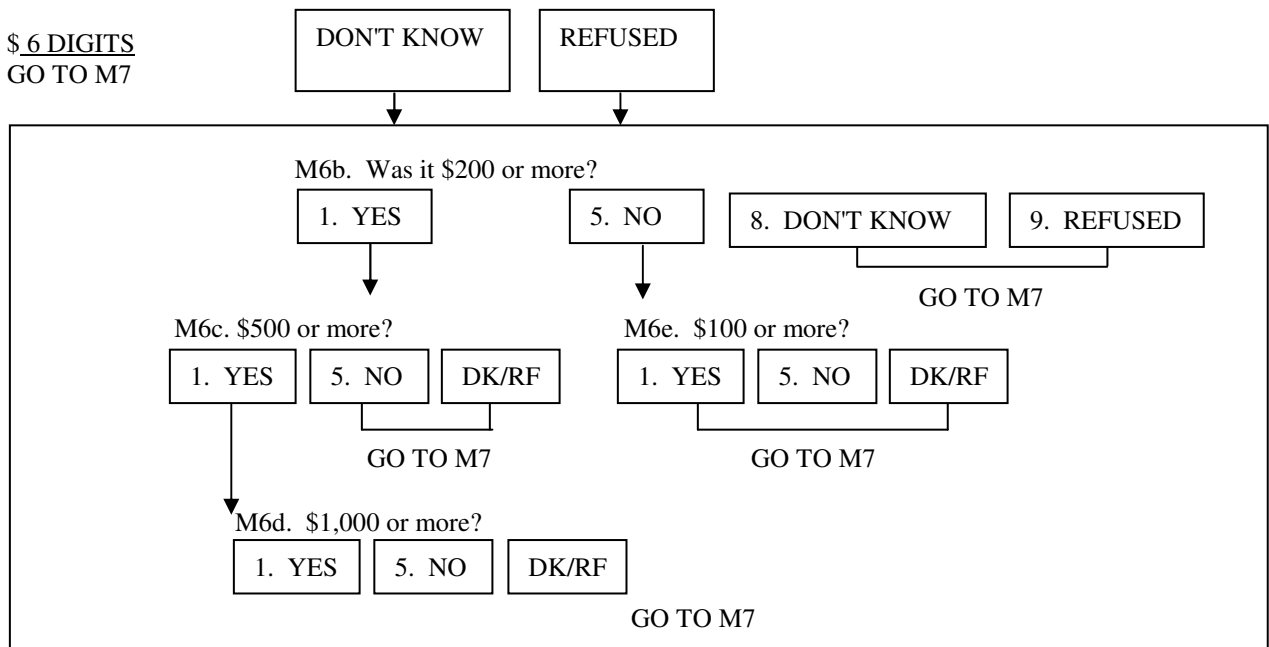
M5a. What was the total dollar value of all donations you [and your family] made in 2006 towards **health care or medical research** organizations?



M6. [M2=1 OR M3=1 OR M4=1 OR M5=1: (Not counting the donations you just told me about,) did you/ ELSE: Did you] [or anyone in your family] make donations (during 2006) towards **educational** purposes? For example, to colleges, grade schools, PTAs, libraries, or scholarship funds? Please do not include direct tuition payments for you or other family members.



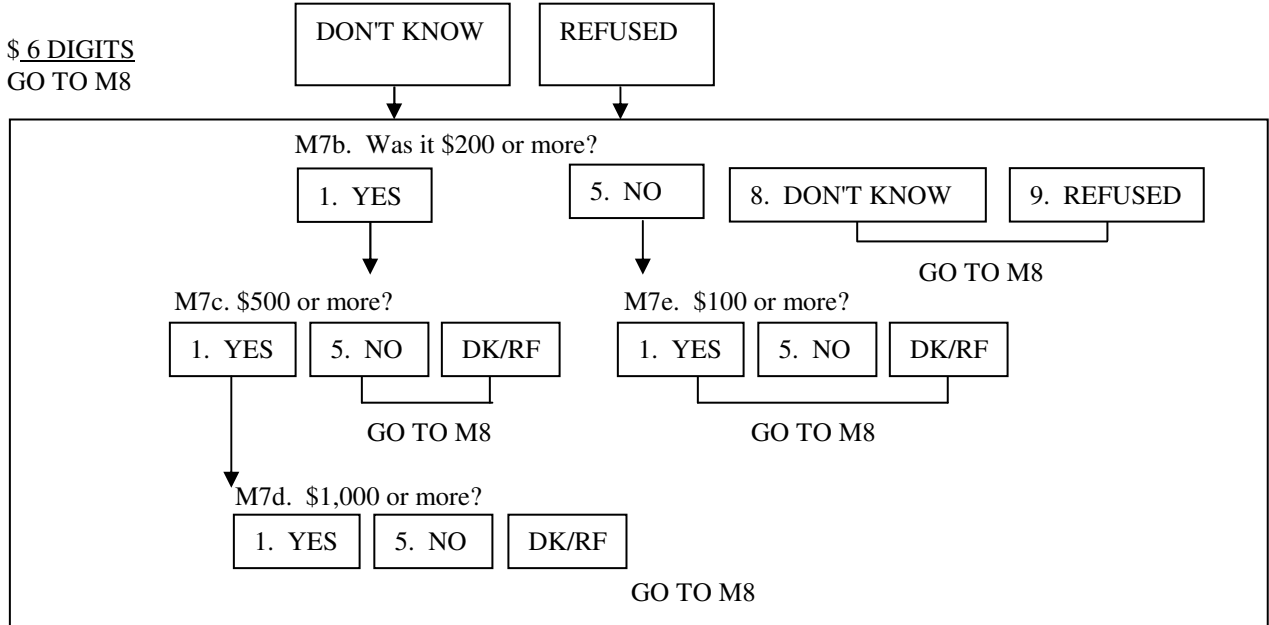
M6a. What was the total dollar value of all donations you [and your family] made in 2006 towards **educational** purposes?



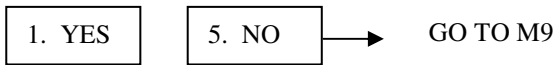
M7. [M2=1 OR M3=1 OR M4=1 OR M5=1 OR M6=1: Not counting the donations you just told me about, (during 2006,) did you/*ELSE*: (During 2006) did you] [or anyone in your family] make donations to organizations that provide **youth or family services**? Such as to scouting, boys' and girls' clubs, sports leagues, Big Brothers or Sisters, foster care, or family counseling?



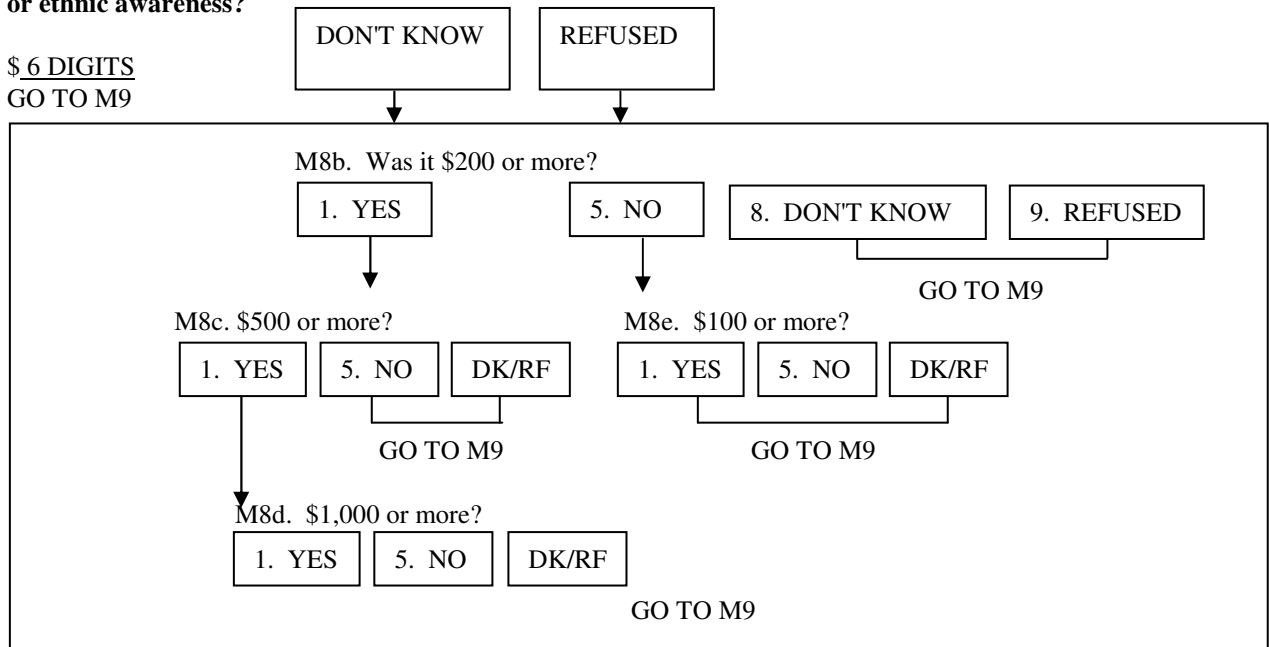
M7a. What was the total dollar value of all donations you [and your family] made **in 2006** towards **youth and family services** purposes?



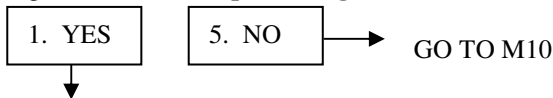
M8. [M2=1 OR M3=1 OR M4=1 OR M5=1 OR M6=1 OR M7=1: (Not counting the donations you just told me about, during 2006,) did you/ *ELSE*: (During 2006) did you] [or anyone in your family] make donations to organizations that support or promote the **arts, culture, or ethnic awareness**? Such as, to a museum, theatre, orchestra, public broadcasting, or ethnic cultural awareness?



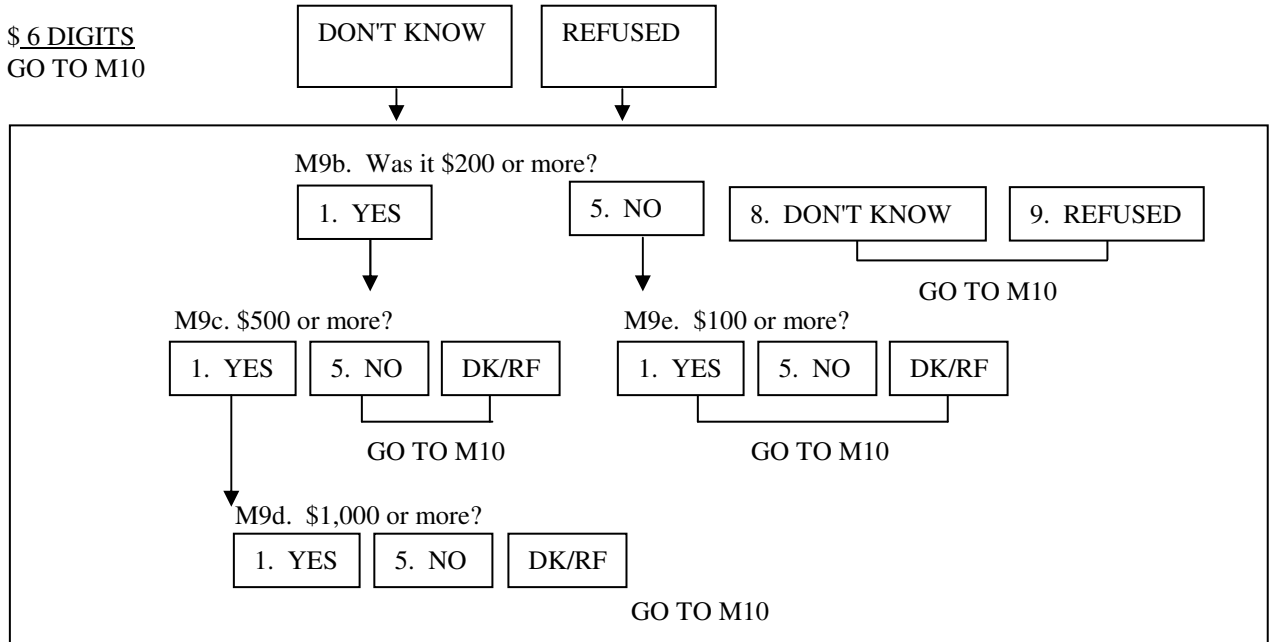
M8a. What was the total dollar value of all donations you [and your family] made **in 2006** towards the **arts, culture, or ethnic awareness**?



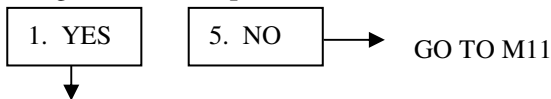
M9. [M2=1 OR M3=1 OR M4=1 OR M5=1 OR M6=1 OR M7=1 OR M8=1: Not counting the donations you just told me about, (during 2006,) did you/ ELSE: (During 2006,) did you] [or anyone in your family] make donations to organizations that **improve neighborhoods and communities**? Such as, to community associations or service clubs?



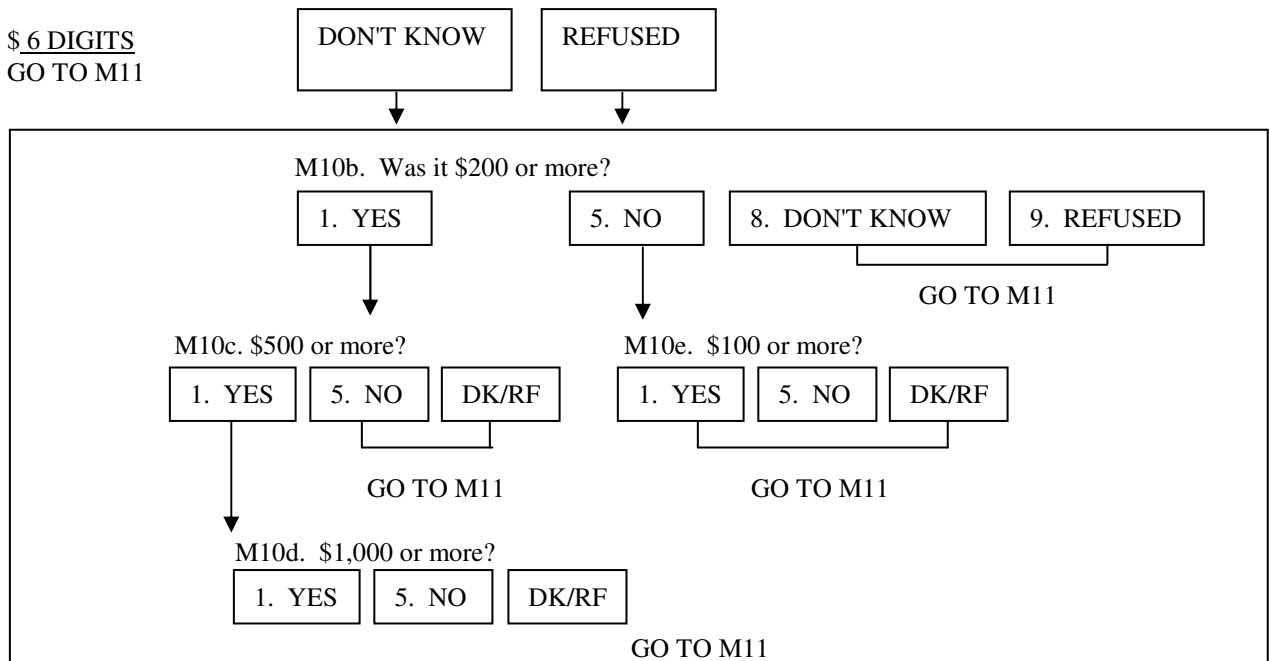
M9a. What was the total dollar value of all donations you [and your family] made **in 2006** towards **improving neighborhoods and communities**?



M10. [M2=1 OR M3=1 OR M4=1 OR M5=1 OR M6=1 OR M7=1 OR M8=1 OR M9=1: (Not counting the donations you just told me about, during 2006,) did you/ ELSE: (During 2006,) did you] [or anyone in your family] make donations to organizations that **preserve the environment**? Such as, for conservation efforts, animal protection, or parks?



M10a. What was the total dollar value of all donations you [and your family] made **in 2006** towards **preserving the environment**?

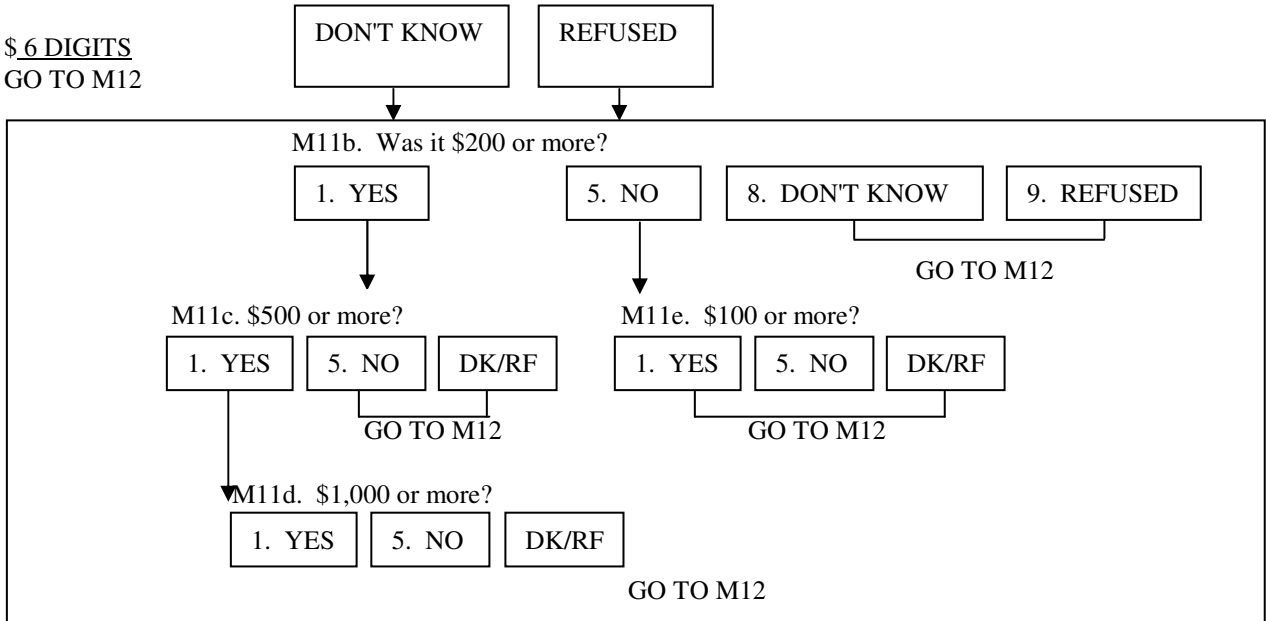


M11. [M2=1 OR M3=1 OR M4=1 OR M5=1 OR M6=1 OR M7=1 OR M8=1 OR M9=1 OR M10=1: (Not counting the donations you just told me about, during 2006,) did you/ ELSE: (During 2006,) did you] [or anyone in your family] make donations to organizations that provide international aid or promote world peace? Such as, international children's funds, disaster relief, or human rights?

1. YES 5. NO → GO TO M12

M11a. What was the total dollar value of all donations you [and your family] made **in 2006** towards **providing international aid or promoting world peace**?

\$ 6 DIGITS
GO TO M12



M12. [M2=1 OR M3=1 OR M4=1 OR M5=1 OR M6=1 OR M7=1 OR M8=1 OR M9=1 OR M10=1 OR M11=1: Not counting the donations you just told me about, did you/ ELSE: (During 2006,) did you] [or anyone in your family] make donations (during 2006) of money, assets, or property to charitable organizations with purposes **other than** those we just talked about?

1. YES 5. NO → GO TO SECTION R

M12a. What was the main purpose or cause supported by that organization? (AO) Please tell me a little more about that. What do these organizations do? (*vets' orgs, police/firefighters assoc, historical/memorial societies, animal shelters*)

M12b. What was the total dollar value of all donations you [and your family] made **in 2006** towards **(this/these) last purpose(s)**?

\$ 6 DIGITS
GO TO SECTION R

