

# Does Jewish Philanthropy Differ by Type of Giving and Sex?

## **Debra J. Mesch**

Professor of Public and Nonprofit Management  
School of Public and Environmental Affairs  
Director, Women's Philanthropy Institute  
at the Center on Philanthropy at Indiana University

## **Zach Moore**

MA Student in Economics  
Department of Economics, IUPUI

## **Mark O. Wilhelm**

Professor of Economics and Philanthropic Studies  
Department of Economics, IUPUI

# Women's Philanthropy Institute at the Center on Philanthropy at Indiana University

The Women's Philanthropy Institute furthers the understanding of women's philanthropy through research, education, and knowledge dissemination.

## Examples:

- Convened first ever WPI Research Committee with IU faculty and academics from around the country
- Developed two-day curriculum on “Dynamics of Women's Giving”
- Published “Making Philanthropy Count: How Women are Changing the World”

# The Research Questions

- Are there differences in secular and religious giving between Jewish and non-Jewish households?
- Are there differences in secular and religious giving within Jewish households by sex?
- Are there differences in secular and religious giving by Jews across marrieds and singles?

# Significance of Study

- Empirical research on Jewish giving is limited.
- Study expands upon Wilhelm's (2008) research on giving to help people in need.
- Limited research on gender differences in philanthropic giving within or across religious denominations.
- Study uses the *PSID*—robust longitudinal data set—to examine research questions.

# Data

- Center on Philanthropy Panel Study (COPPS)
- Giving and volunteering module within the Panel Study of Income Dynamics (PSID)
- Multiple years (2000, 2002, 2004) from same families.
- High quality data on giving as well as control variables

# Question Asked

- Did you make any donations specifically for **religious purposes or spiritual development**, for example to a church, synagogue, mosque, TV or radio ministry? Please do not include donations to schools, hospitals, and other charities run by religious organizations. I will be asking you about those donations next.
- [If yes]. Altogether, what was the total dollar value of all donations you [and your family] made [year] towards **religious purposes**?
- For secular giving, respondents were asked whether or not they gave to a list of secular causes, and, if yes, the total dollar value of giving to those causes. If the household gave \$25 or less, then their giving amount is set to zero in the data.

# Sample

6359 families

Table 1: Non-Jewish and Jewish Giving

	<b>Non-Jewish</b> n=6210		<b>At least one Jewish</b> n=149	
	Percent who give	Average amount among givers	Percent who give	Average amount among givers
Religious Giving	0.62	1440 [464]	0.69	2221 [612]
Secular Giving	0.76	660 [224]	0.96	1967 [911]

Note: These summary statistics are weighted.  
The median is the amount in brackets.

# Table 2: Descriptive Statistics without Controls

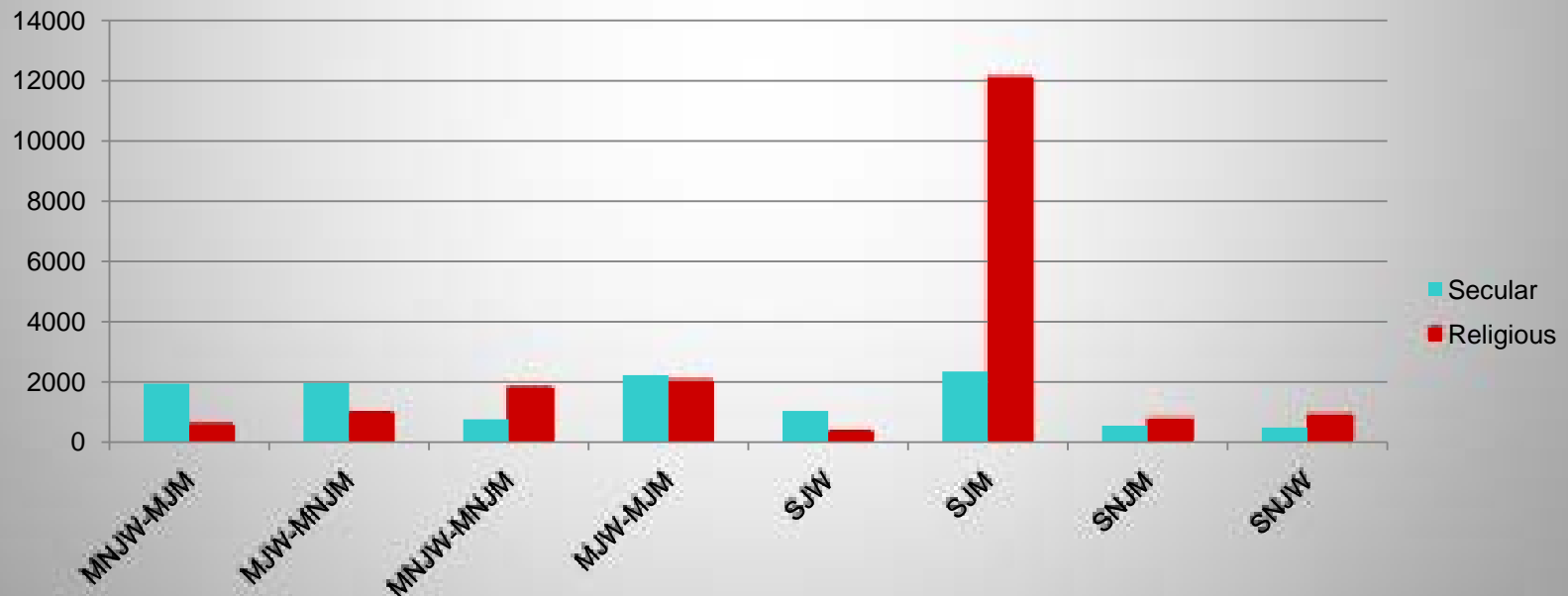
Table 2: Descriptive Statistics of Sample by Marrieds and Singles

	Married/Couples				Singles			
	Both Non-Jewish n=3801	Man Jewish n=32	Woman Jewish n=25	Both Jewish n=60	Non-Jewish Man n=675	Non-Jewish Woman n=1734	Jewish Man n=12	Jewish Woman n=20
<b>Religious Giving</b>								
Percent who give	0.68	0.55	0.67	0.85	0.47	0.57	0.53	0.56
Avg. amount among givers	1794	570	961	2020	753	881	12104	339
Median amount among givers	594	535	688	1040	284	354	250	166
<b>Secular Giving</b>								
Percent who give	0.81	0.99	0.98	0.99	0.65	0.71	0.95	0.84
Avg. amount among givers	760	1943	1963	2227	550	483	2348	1039
Median amount among givers	283	607	527	1227	167	141	1008	496

Note: The summary statistics are weighted.

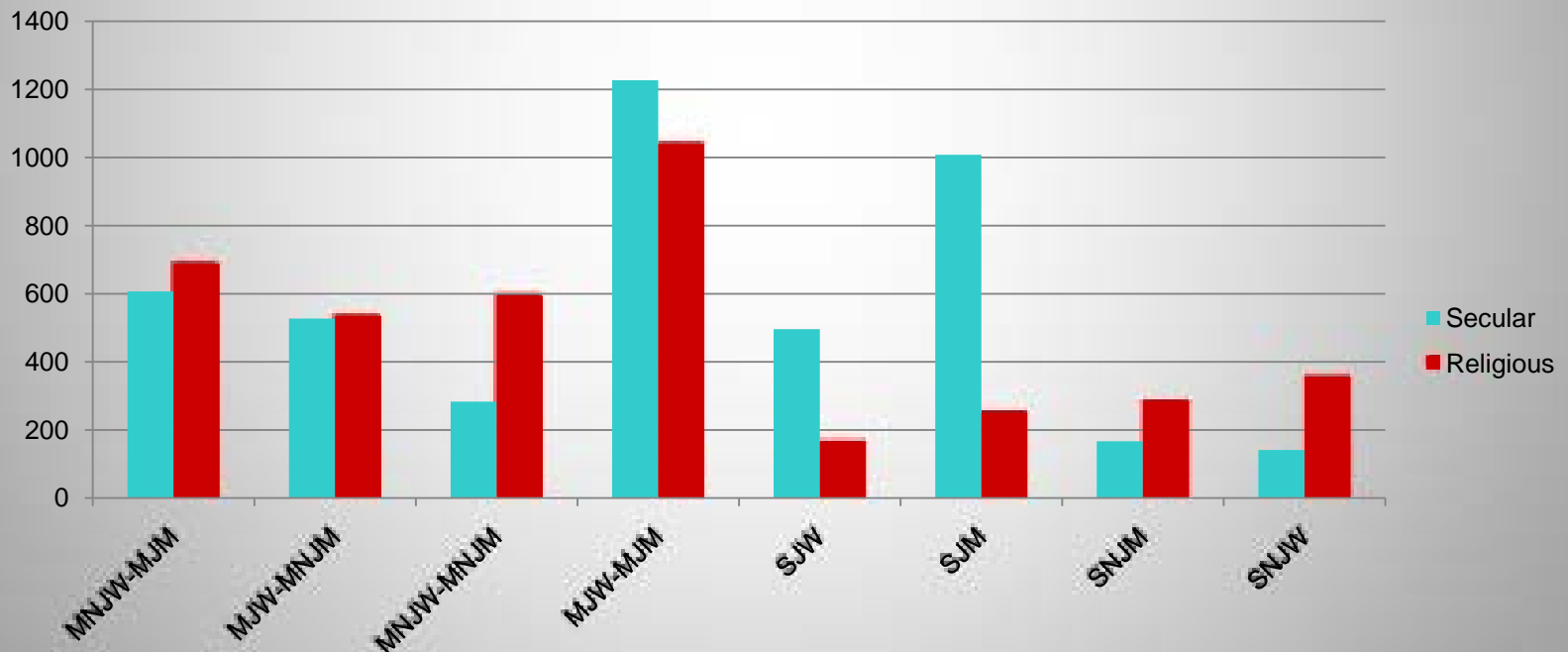
# Mean giving amount by Secular and Religious Giving

Mean of 2000, 2002, and 2004  
giving amounts.



# Median giving amount by Secular and Religious Giving

Median of 2000, 2002, and 2004 giving amounts.

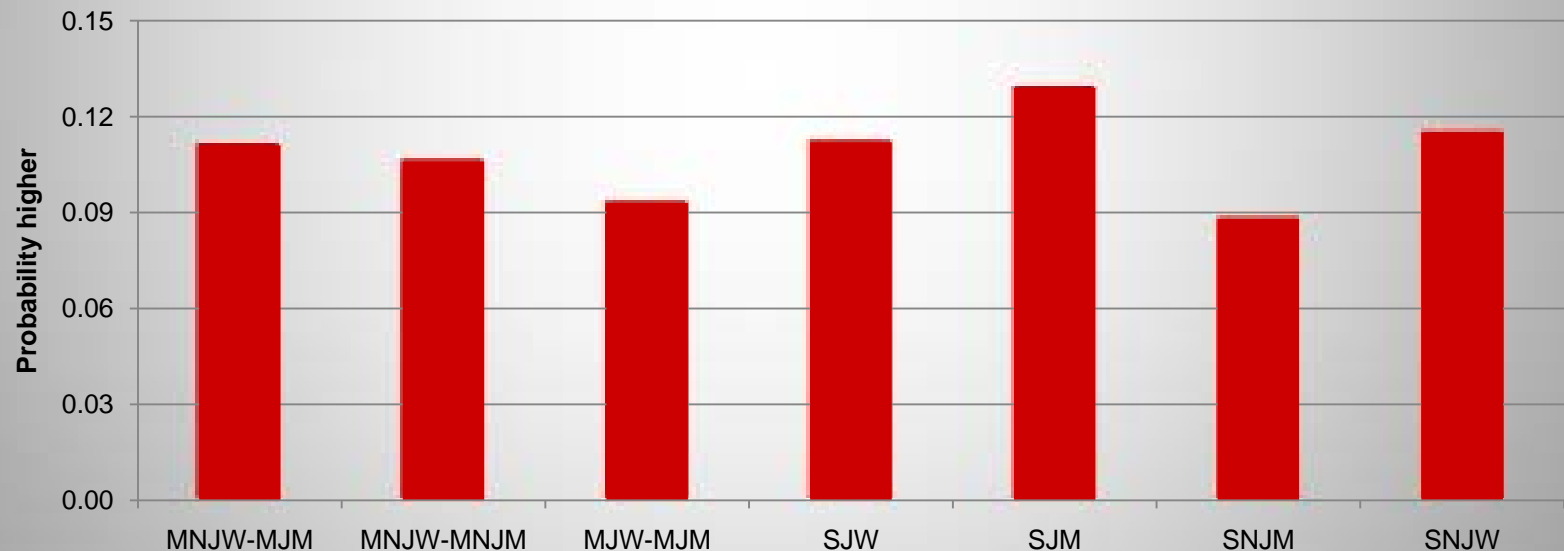


# Controls Used in Study

- Income (for 2004)
- Wealth (assets—with and without house)
- Education (categorical variable, less than H.S. through post-Bachelors)
- Age
- Number of children
- Age of youngest child
- Region (dummy variable of regions in U.S.)
- Employment status (working or not working)
- Health (poor/fair/good)

# Results from Tobit

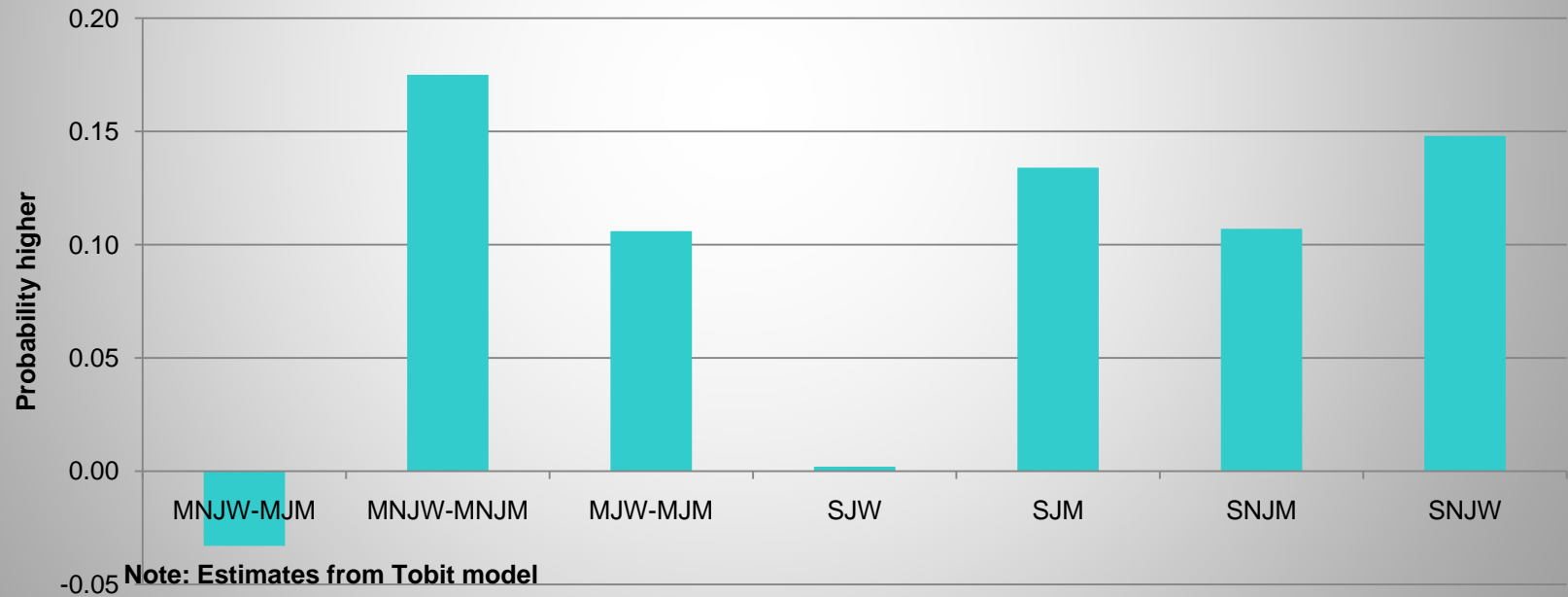
**Secular Giving: At least once in 2000, 2002, or 2004.  
Difference relative to MJW-MNJM**



**Note: Estimates from Tobit model**

# Results from Tobit

**Religious Giving: At least once in 2000, 2002, or 2004.  
Difference relative to MJW-MNJM**



# Table 3: Tobit Model for Secular and Religious Giving

Tobit Model: Marginal Effects

Dependent Variable	Secular Giving		Religious Giving	
	Probability of Giving	Log amount conditional on giving	Probability of Giving	Log amount conditional on giving
MNJW-MJM	.111***	1.15***	-0.033	-0.136
MNJW-MNJM	.106**	.512**	.175**	.742**
MJW-MJM	.093***	.762**	.106*	0.558
SJW	.112***	1.17**	0.002	0.008
SJM	.129***	2.13***	0.134	0.764
SNJM	.088***	.592**	0.107	0.532
SNJW	.115***	.718***	.148**	.722*
Pseudo R-Squared	0.112		0.060	

Notes: The dependent variable is the logarithm of the three-year average (2000, 2002, and 2004) of giving to either secular or religious purposes. The estimates are from Tobit models. The omitted reference group is MJW-MNJM.

The models are weighted.

Significance levels: \*p<.10,

\*\*p<.05,

\*\*\*p<.01

# Conclusions

- Jewish women who marry non-Jewish men are less likely to give to religion. For Jewish men who marry non-Jewish women, the result is the same.

## **BUT SECULAR GIVING IS DIFFERENT!**

- Jewish women who marry non-Jewish men give less to secular causes than all other Jews:
  - Jewish men who marry non-Jewish women
  - Jewish women who marry Jewish men
  - Single Jewish women
  - Single Jewish men

**What is it about Jewish women who marry non-Jewish men that makes them less likely to give to secular causes?**

# **Women's Philanthropy Institute at the Center on Philanthropy at Indiana University**

550 W. North Street, Suite 301  
Indianapolis, IN 546202

<http://www.philanthropy.iupui.edu/PhilanthropicServices/WPI/>

317-278-8990 wpiinfo@iupui.edu